

The Natural History of Aston Lodge Park

1996-2021



David W. Emley

The Natural History of Aston Lodge Park

1996-2021

The housing estate of Aston Lodge Park lies on the southern outskirts of Stone and is surrounded, on two sides, by open countryside. Because of this it is a much sort after estate on which to live. However, it is these very conditions of surrounding fields yet closeness to a town that puts the area at risk of further development and expansion. One of the current buzz words in planning is “biodiversity” i.e., the number of different species within an area or habitat. This report details nearly 900 species of flora and fauna recorded in our area, but that is only a fraction of what is to be found here. So, by any standards, we are a rich and biodiverse area. If we are to protect and enhance our estate, then we need to know what we already have, and it is hoped that this report goes some way to providing that information. Indeed, its data has already proven useful in that respect. It is also hoped that it will enhance residents’ enjoyment of what is a very pleasant place to live.

The Study Area

Aston Lodge Park is a housing estate consisting of mainly three-, four- and five-bedroom detached houses situated two miles south of Stone at Little Stoke. It is a well-defined estate being somewhat triangular in outline and bounded to the west by the London to Manchester railway line, to the south by the B5027 Uttoxeter Road and to the north and east by the farmland of Aston Lodge Farm. It covers some 50 hectares and lies at an average height of 110m. Within the estate there is little evidence of the former farmland on which it is built except for two streams, which are lined with Alders, and a few mature Pedunculate Oaks.

The main study area centres on the interface between the eastern edge of the estate and the surrounding farmland. The houses here were among the last to be built - around 1996/97. In order to place sightings, I have given names to the main features for ease of reference, and these are indicated on the map at the back of this document and are further described below.

Boundary Brook and path

A small stream – **Boundary Brook** - separates the estate from the farmland. It flows southwards along the edge of **Upper Wood** and skirts the eastern edge of the estate. A small pool has been excavated where the Brook is culverted under the footpath by the **Wicket Gate**. The lower course of the Brook is lined with caissons containing boulders; presumably to reduce the water flow. It then flows through a culvert and under **Saddler Avenue**.

Boundary Path is a metalled path that follows the line of the Brook down to Saddler Avenue. The banks of the lower Brook are lined with Reed Mace, Hard and Soft Rush, Meadowsweet, Tufted Hair-grass and Greater Willowherb with a few Hazels, Hawthorns and Ashes



while the **Path** is lined with Hazel and Bramble. Together they form an important highway and nesting area for birds and a food resource for insects

Leacroft Hedge

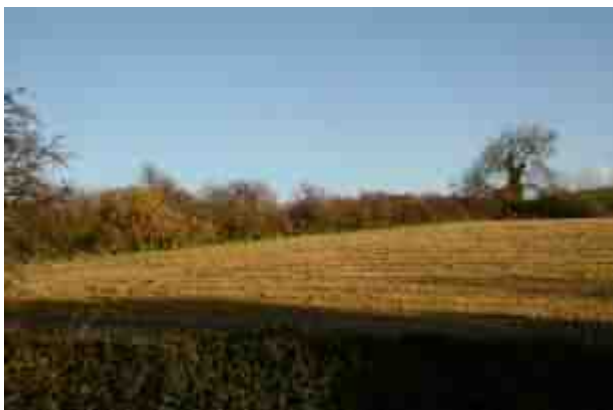


This is all that remains of an old hedgerow that once stretched down to the entrance to the estate.

It runs along the back of **Leacroft** and consists mainly of Hawthorns up to 8m tall, with Blackthorn, Hazel, Elder and one mature Pedunculate Oak. It is an important habitat for birds being a major corridor along which to

move and also a nesting site for species like Blackcap, Garden Warbler and Chiffchaff. Unusual species also occur on migration such as Lesser Whitethroat, Redstart and, on several occasions, Waxwings.

Crop Field



This is an important field for birds. In the past it was ploughed annually and was used mainly for cereals. After harvesting it was usually left with stubble and weeds which provided an important food source for sparrows, finches and buntings as well as pigeons and occasionally thrushes. In recent years, however, it has been cultivated for grass and having at least two cuts per year. It can attract many birds after it has been cut and the weed seeds are exposed.

Grassy Patch



An area of rough grassland and naturally regenerating hawthorn with several other small trees. To the south-east of the area is **Blackies Lane** which is bordered by mature trees which include Wych Elm, Field Maple, Alder, Ash and Hazel. To the west is a 3m-wide bed of Bramble, Dog Rose and Field Rose. To the north is a fence separating the site from the **Crop Field**, this is bordered by a 3m-wide bed of Bramble. Two streams are culverted under the area and two footpaths cross the site.

The large areas of Bramble, Nettle and rough grass support a wide range of species of flora and fauna. The Bramble provides a nesting habitat for summer

migrants birds including Whitethroat, Blackcap and Lesser Whitethroat as well as for resident species like Dunnock, Blackbird, and Robin. Its flowers also provide nectar for many insects such as bumblebees, while the fruits are an important food source for wintering birds and for migrants fattening up for the journey south. The nettles are a major foodplant of some of our familiar, but declining, butterflies while rough grasses and associated plants provide food and nectar for a number of grassland butterflies and their larvae. Indeed, one visit in 2018 revealed 16 Common Blues and five Small Coppers plus a White-letter Hairstreak. It also hosts a grass-feeding moth *Ochsenheimeria ustella* which is classed as "Nationally Scarce". The Lesser Marsh Grasshopper and the Long-winged Cone-head cricket have recently been found (2019) making this the second most northerly site in the county for both of them. The adjacent hedgerow of **Blackies Lane** with its Wych Elm supports one of our rarer butterflies; White-letter Hairstreak; a declining and Section 41-listed species in the Natural Environment and Rural Communities Act 2016.

Boundary Hedge



A low hawthorn hedge that separates the **Upper Meadow** from the **Crop Field** and provides a "corridor" for species moving between **Leacroft Hedge** and **Blackies Lane**.

It is a popular gathering spot for sparrows, finches and buntings in the afternoon. There is a mature Pedunculate Oak part-way along the hedge.

Blackies Lane

The lane leading to Aston Lodge Farm is one of the main habitats. In its lower course it is flanked by the **Lodge Brook** which, at this point, is lined with Alders. It then passes through a cutting (pictured) which is up to three metres below the level of the surrounding fields.

The cutting is flanked by mature hedgerows of Hawthorn, Blackthorn, Hazel, Field Maple and Wych Elm with two mature Ash trees half-way along. During the Spring the track side is lined with Jack-by-the-Hedge, an



important foodplant for Orange-tip butterflies, and Cow Parsley an important nectar source for insects.

The Lane emerges from the cutting, crosses a cattle grid and winds its way across the **Upper Meadow** to **Aston Lodge Farm**.

The Pond



A small, shallow pond about 10m diameter; used as a watering-hole by cattle in the summer months. It is the largest area of open water in the study plot and as such is attractive to passing Moorhens and Mallards. Its northern shore is lined with scrubby hawthorns and two Ash trees which, though only small in area, provide an important "stepping-stone" for birds moving across the open fields.

In 2018 and 2021 it almost dried up. The drying mud is attractive to a range of invertebrates while in the winter it has attracted a Green Sandpiper on several occasions. Frog spawn is found here and dragonflies, like the Emperor, have been seen egg-laying.

Upper and Lower Meadows

These are the two main areas of grassland in the study plot and are lightly grazed by a small herd of cattle throughout the year. They are manured at least annually and, if left to flower, support a sward of buttercups - mainly Bulbous - with a few unusual species such as Tormentil and Devil's-bit Scabious adjacent to **Boundary Brook**.



A public footpath, starting at the **Wicket Gate** by **Boundary Path**, crosses the two fields, passing a mature Pedunculate Oak and **The Pond**.

Newt Pools

At the top of Lander Close are three ponds that were excavated by Fradley the builder as conservation pools for Great-crested Newts in mitigation of loss of habitat.



They are home to a number of species of dragonfly and damselfly including Emperor, Broad-bodied Chaser, Large Red, Common Blue and Blue-tailed Damselflies.

The main pool (photo) has a fringe of Yellow Iris. Sadly, the pools are overgrown, one being covered in *Crassula helmsii* or New Zealand Pygmy-weed much of which has been removed but it is still there and needs vigilance to keep it clear. They have great potential.

Lodge Brook

The second water course that traverses the study area. It flows through **Lodge Plantation**, along the southern edge of the **Lower Meadow** though a steep-sided gully lined with a mixture of Ash, Hawthorn, Oak and Alder before crossing under **Blackies Lane** and thence through a culvert where it joins **Boundary Brook** to cross under Saddle Avenue, around the back of Mercer Avenue and under the road near its junction with Lyndhurst Grove. This stream is very rich in aquatic invertebrates such as freshwater shrimps, caddisflies and mayflies.

Upper Wood



A northward continuation of **Leacroft Hedge**. It comprises mainly Pedunculate Oaks with Holly and is situated on a steep slope backing Lander Close and Philips Close. It is separated from the **Upper Meadow** by **Boundary Brook**.

Recreation Ground



A small stream crosses the estate from north to south between Aston Chase and Ullswater Drive. It is lined with Alder, willows and Oaks and attracts birds such as Siskins in the winter months. Here is a large playground area in the centre of the estate surrounded by mown grass. It has potential for wildflower planting.

The Oaks



A small area of rough grassland and brambles between Saddler Avenue and the **Wicket Gate** on **Boundary Path**.

It contains several large and old (120 years+) oaks. Access is difficult so it is a safe area for nesting birds.

Farrier Patch



A small area of grassland between Farrier Close and **Boundary Brook**. It is currently backed by a thicket of young Wild Cherries, but it is a possible site for future wildflower planting.

Currently it attracts burnet moths and butterflies such as Small, Large and Essex Skipper, Ringlet and Meadow Brown.

Lodge Plantation



A large and inaccessible plantation of mixed trees, mainly poplars; used as a roost by pigeons and a possible breeding site for Buzzards.

The Stables

The horse stables are situated off the Uttoxeter Road. The horses and the consequent manure attract birds such as Yellowhammer, Chaffinch and Collared Dove.

Private Gardens

The gardens of the houses that make up the estate are an important nature reserve in their own right, attracting many species that either live there, spend the winter, pass through or just fly over. Garden ponds are particularly important for aquatic species such as frogs, toads, newts and dragonflies.

Species lists

There follows a list of all the species that I have found within the recording area. It is, of course, not complete as there are many groups, especially invertebrates, that I have not studied. Should you come across anything that is not mentioned here, or which is of interest, then do get in touch so that we can keep the survey up to date.



Mute Swan *Cygnus olor*

Birds are occasionally seen flying over however, a pair landed on **The Pond** 14/10/20 and was seen on 15th too.

Whooper Swan *Cygnus cygnus*

A bird flew over **Leacroft** on 2/11/08 heading north.

Pink-footed Goose *Anser brachyrhynchus*

Movements, in response to cold and freezing weather on the east coast, regularly bring birds to North Staffordshire heading to the milder west coast. Records for Aston Lodge include a skein of 100 flying over in a westerly direction on 28/12/99, another of 150 passed south-west on 27/1/02, one of 50 passed over in a westerly direction on 4/1/03 and 100 headed west on 13/1/05, 100 headed west on 11/12/12, 180 heading east on 30/10/16, and two skeins totalling 250 flew west on 6/1/18 part of a mass movement over north Staffordshire that day. A skein of 68 passed over on 17/10/20, heading NW. A skein of 100 headed west at 15.30hr on 29/12/20.

White-fronted Goose *Anser albifrons*

Two with a skein of 100 Pink-feet on 29/12/20.

Greylag Goose *Anser anser*

A bird flew over the **The Meadows** on 3/7/02, another over **Leacroft** on 1/11/07 and one on 10/03/12. Flocks of 15 flew west on 3/11/18, 40 on 30/11/19, 12 on 16/3/20 and four on 16/11/21.

Canada Goose *Branta canadensis*

Small flocks of up to 10 are often seen flying over. The largest flocks include 30 over **Leacroft** on 1/6/19 and 31 on 12/10/19.

Mandarin Duck *Aix galericulata*

A pair flew north over the estate on 28/3/19.

Eurasian Teal *Anas crecca*

A female was flushed off **The Pond** on 12/1/02.

Mallard *Anas platyrhynchos*

A pair is often seen flying behind **Leacroft** and they are occasionally disturbed from **The Pond**. A flock of six flew over on 29/10/11.

Pintail *Anas acuta*

A flight of 100 ducks over **Leacroft** on 29/9/06 included (from their silhouettes) three Pintail.

Goosander *Mergus merganser*

A pair flew over **Leacroft** on 12/2/11. They are not uncommon now on the River Trent and may even breed in the Stone area.

Red-legged Partridge *Alectoris rufa*

There used to be a regular covey in the area, a group of 14 seen in the **Crop Field** on 24/12/01 being the largest number recorded. Last recorded 25/3/19 with one in a garden in 2021.

Pheasant *Phasianus colchicus*

Fairly common in surrounding fields and copses. Eight were seen in **Blackies Lane** on 25/11/01, six in the **Crop Field** on 26/1/02 and one on the **Grassy Patch** on 24/12/20. Occasional records from gardens.

Cormorant *Phalacrocorax carbo*

With the River Trent being not far away, it is not unusual to see birds occasionally flying over. The largest numbers recorded are a flock of seven seen heading SE over the estate on 23/12/01, three over on 6/11/11 and eight on 6/4/19.

Grey Heron *Ardea cinerea*

Sometimes visits garden fishponds on the estate and birds have been seen perched on the roofs of houses along **Saddler Avenue**. Occasional birds have been flushed from **The Pond**.

Red Kite *Milvus milvus*

One flew over **Leacroft**, heading east on 10/4/11, one on 11/7/15, one headed west on 26/1/18 and one was seen over the **Grassy Patch** in mid-2018. Other sightings over the estate were on 18/1/20, 10/5/20, 24/7/20, 12/8/20, 13/8/20 (two). This species now breeds sparingly and irregularly in North Staffordshire and more sightings are likely.

Sparrowhawk *Accipiter nisus*

Single birds are often seen flying over. They also visit gardens on the estate.

Buzzard *Buteo buteo*

Frequently seen and heard circling over the estate. Groups of three have been seen on 28/8/99, 9/4/00 and 30/4/00 while parties of four were seen on 1/9/02,

19/3/11, 26/8/13, six on 26/4/03, nine on 17/4/11 and a record 14 on 24/3/17.

Osprey *Pandion heliaetus*

A bird passed low over **Leacroft**, heading south, on 24/8/03. It was seen to be chased by two Buzzards which were noticeably smaller.

Honey-buzzard *Pernis apivorus*

One flew over the estate heading east being pursued by crows on 9/6/20. A rare bird in Staffordshire.

Peregrine Falcon *Falco peregrinus*

One circled over **Upper Meadow** on 15/1/20, one over **Leacroft** 9/5/20, 5/8/20, 22/9/20 and two juveniles on 7/10/20.

Kestrel *Falco tinnunculus*

Only occasionally seen over the fields behind **Leacroft**.

Hobby *Falco subbuteo*

Occasionally seen overhead in the mid-summer/late summer months. Records include singles on 12/8/99, 28/8 and 29/8/99, 16/9/01, 30/8/03, 7/9/03, 20/8/05, 5/8/07, 8/8/12, 28/9/14, 13/8/19, 10/5/20, 24/7/20, 20/8/20.

Moorhen *Gallinula chloropus*

Seen by **The Pond** on many occasions.

Oystercatcher *Haematopus ostralegus*

One was heard flying over **Leacroft** at night in 1996; one was seen heading south on 18/3/19 and one was heard on 11/4/20.

Golden Plover *Pluvialis apricaria*

One flew over **Leacroft** on 19/4/98 and three on 30/4/03.

Lapwing *Vanellus vanellus*

They are occasionally seen flying over, the largest flock comprised 58 that flew east on 12/1/02. Two pairs attempted to nest in 2003. Display was observed on many occasions, but they were unsuccessful, probably due to the attentions of Crows and Magpies.

Curlew *Numenius arquata*

Birds are occasionally heard flying over the fields behind **Leacroft** in the spring. Records include singles on 20/4/97, 18/4/99, 22/6/01, 24/3/20.

Green Sandpiper *Tringa ochropus*

A bird that flew over **Leacroft** on 27/9/98 may have been disturbed from **The Pond**. Another was seen by **The Pond** on 20/12/18 and again on 24/12/18 and 7/1/19 while possibly the same returning bird was there on 17/8/2019 and on 12-13/11/2020.

Snipe *Gallinago gallinago*

A flock of seven flew over **Upper Meadow** on 16/10/97, one was flushed from **Boundary Brook** on 1/1/02 and two flew over **Leacroft** on 14/3/04, one landed by **The Pond** on 23/12/07 and one flew over on 24/12/10.

Black-headed Gull *Chroicocephalus ridibundus*

The commonest gull seen overhead; sometimes in large numbers circling in thermals, often catching flying ants.

Lesser Black-backed Gull *Larus fuscus*

The commonest large gull seen overhead. Flocks of up to 100 are often seen in **Upper Meadow** especially after muck spreading. Like Black-headed Gull, sometimes in large numbers circling in thermals. One of the race *Larus fuscus intermedius* flew over on 28/10/20.

Herring Gull *Larus argentatus*

Occasionally identified flying overhead, usually with Lesser Black-backed Gulls.

Stock Dove *Columba oenas*

Birds nest in the area and are often heard calling in spring. A pair was observed in courtship flight along **Blackies Lane** on 11/10/97. Four were seen with Woodpigeons in the **Crop Field** on 23/12/01 and 15 on 8/1/02. One visited a **Leacroft** garden 24/9/18.

Woodpigeon *Columba palumbus*

Very common; flocks of several hundred roost in **Lodge Plantation** and large flocks are often seen on newly-ploughed fields. It is a common garden visitor too. Records of larger numbers include a flock of 300 over **Leacroft** on 1/11/01, 400 feeding in the **Crop Field** on 8/1/02, 150 over **Leacroft** on 11/11/04, 2000 heading west on 31/10/08 over the space of an hour.

Collared Dove *Streptopelia decaocto*

Commonly nest in and around the estate and it is not unusual to see them flying overhead; but large gatherings are unusual. They sometimes congregate around the Stables. Five in **Leacroft** on 12/10/03, six on 17/10/09 and 13 on 5/11/14 are the largest number for the garden.

Cuckoo *Cuculus canorus*

A bird was heard behind **Leacroft** on 11/5/98 and one on 6/6/13.

Tawny Owl *Strix aluco*

Often heard calling at night, there are sometimes two or three in the area behind **Leacroft**.

Little Owl *Athene noctua*

It has been reported from behind **Leacroft**, but I have yet to see it.

Swift *Apus apus*

A frequent summer visitor; often flying at immense heights above the estate. A flock of 200+ above the house on 23/7/10 were possibly feeding on flying ants.

Common Kingfisher *Alcedo atthis*

Several sightings on **Mercer Avenue** where the stream goes under the road *per J. Stripp*.

Green Woodpecker *Picus viridis*

One spent a day behind **Leacroft** on 31/7/05 visiting the **Crop Field** and **Upper Meadow**, one was heard behind **Leacroft** in August 2007 and singles on 8/4/08, 29/8/08, 24/9/08 (landed in **Leacroft Hedge**) and 15/8/10, 5/9/10 (in garden).

Great Spotted Woodpecker *Dendrocopus major*

A frequent garden visitor often heard calling from the woodland and hedgerow trees and commonly seen flying over. The larger gatherings include three at **Leacroft** on 21/2/98, 4/4/98 and 19/1/18 while four birds were seen chasing each other around the trees behind **Leacroft** on 22/1/99.

Magpie *Pica pica*

A common species, breeding in hedgerows and visiting gardens. Larger gatherings include six in **Leacroft Hedge** on 14/10/99 and 29/4/01, 24 on 25/9/08, 15 on 17/10/13, 14 on a **Saddler Avenue** roof on 11/3/19.

Jay *Garrulus glandarius*

Not uncommon in nearby woodland. Often visits the large oaks in **Upper Meadow** and **Upper Wood**. One visited **Leacroft Hedge** on 28/1/04 and one fed on our bird table on 18/12/05, one in **Leacroft Hedge** 19/12/09, two on 28/9/18, one on 30/11/19 and one on 27/10/20.

Jackdaw *Corvus monedula*

A common species. There is a large roost in nearby woodland and up to 500 have been seen flying over before dawn.

Rook *Corvus frugilegus*

There is a large roost in nearby woodland. Large flocks not infrequently fly over. They have been seen gorging on acorns in nearby large oaks while birds occasionally visit gardens on the estate. There were three nests in **Blackies Lane** in 2019 and 2020.

Carrion Crow *Corvus corone*

Often seen flying over in ones and twos; occasionally seen in gardens.

Raven *Corvus corax*

There are now almost regular sightings of this increasingly common species: early records include one over the **The Meadows** on 24/7/98 (*Sue Emley*), one flew south in November 2001 (*Peter Brade*), one over **The Meadows** on 29/4/01, two flew west on 11/2/02,

two flew over the **Crop Field** on 2/2/03 and another on 21/12/03, 10/1/04 (2), 11/1/04, 18/2/04, 3/3/04 (2), 9/3/04 (2), 16/5/04, 24/9/04, 6/10/04, 9/12/04 (2), 14/4/07 (two mobbing two Buzzards), 18/5/08 and 31/5/08. Birds are now regularly seen or heard overhead. The records of larger groups include four on 6/5/13, six on 4/9/15, five on 27/9/15, four on 14/10/19.

Goldcrest *Regulus regulus*

Birds occasionally accompany tit flocks as they move through. A pair bred in a garden Cedar in 2017 and was seen most of the year; similarly, for 2018, 2019, 2020 and 2021.

Blue Tit *Cyanistes caeruleus*

A common garden visitor and breeding bird. In a **Leacroft** garden, a nest box held a record 14 eggs in 2002, all of which seemed to have reached fledging.

Great Tit *Parus major*

A common garden visitor and breeding bird.

Coal Tit *Periparus ater*

A not uncommon garden visitor; usually in ones and twos. Four were seen in **Leacroft Hedge** on 24/10/99, three on 28/8/07 and three on 19/10/08.

Willow Tit *Poecile montana*

An uncommon garden visitor, though birds may stay several weeks once they find good feeding. One was seen in **Blackies Lane** on 23/1/00, in **Leacroft Hedge** 2/3 to 11/3/01, 15/4/01, 31/1/04, 26/7/04, 7/8/05, 28/8/05, 22/3/06, 26/3/06, 28/7/07, 9/8/08 (two up to the end of the year), up to two visited the garden regularly throughout 2018, 2019, 2020 when adult and juvenile seen and 2021. This is a nationally declining species but one which is holding on in Staffordshire.

Marsh Tit *Poecile palustris*

One was seen briefly in **Leacroft Hedge** on 26/2/12.

Skylark *Alauda arvensis*

Singing birds are regularly heard behind **Leacroft** in the breeding season. Birds are also seen flying over on passage, especially in the early autumn. Records of singles, unless stated otherwise, include 13/10/96 (two), 26/10/96 (four), 12/1/97 (three), 27/4/97, 11/10/97 (three), 3/10/98 (two), 30/10/99 (four), 7/11/99 (10), 27/10/01, 29/12/01, 12/01/02 (three), 19/5/02, 3/11/02 (six), 16/03/03, 11/10/03, 17/10/03 (seven), 27/10/07 (12), 22/9/08 (three), 11/10/08 (two), 18/10/08, 31/10/09, 13/03/16, 16/4/20, 22/9/20, 27/9/20, 11/10/20 (two), 19/10/20, 22/9/21 (two). A bird sang during summer 2018 and spring of 2019.

Swallow *Hirundo rustica*

A common summer visitor. Sometimes larger numbers overhead in autumn e.g., c.100 on 15/9/21.

House Martin *Delichon urbicum*

A common summer visitor; small (and decreasing) numbers nest on the estate. In early autumn large numbers - up to 100 – have been seen flying around the oaks in **Upper Meadow** in September.

Long-tailed Tit *Aegithalos caudatus*

Small flocks - up to 20 (30/8/99) - move along **Leacroft Hedge** in the winter months. Ten were seen on a single feeder on 16/12/98, 20 flew into our Birch tree on 15/10/11, 12 were in the garden on 22/5/17.

Chiffchaff *Phylloscopus collybita*

A common summer breeder. It is frequently seen on passage in **Leacroft Hedge** with two in September 2001 remaining for several weeks. Winter records include a late bird on 3/11/02 four in **Leacroft Hedge** on 21/9/03 and a late bird on 7/12/03. In 2004 an over-wintering bird was seen on 25th December. Two were seen on 11/10/18 in **Leacroft Hedge**. Breeds most years in **Leacroft Hedge**.

Willow Warbler *Phylloscopus trochilus*

A once common summer breeder. 2001 to 2003 were bad years with hardly any being heard in the breeding season. Records from **Leacroft Hedge** include **1997** 18/4, 1/5, **1998** 22/4, 9/8 (two), **1999** 17/4, 29/5, 28/7, 19/8 (two), 23/8, 28/8, 30/8 (two), **2000** 22/4, 6/5, 12/8, 23/8, **2001** 24/8, **2002** 10/4, 29/8, 12/9, **2003** 16/7, 26/7 – 16/8, **2004** 17/4, 26/7, **2005** 3/9, **2006** 18/4, 23/4, **2008** 23/8, **2009** 19/4, 23/4, **2010** 8/4, 17/4, **2011** 1/08, 7/08, **2012** 22/05, 11/08, 01/09, **2013** 30/4, **2014** 9/8, **2015** 16/4, 23/8 (two), **2016** 17/9, **2019** 15/4, 20/4, 25/8/19 (three), **2020** 29/8/20 (two), **2021** 8/5/21, 5/8/21. One heard on the **Grassy Patch** 24/4/21.

Blackcap *Sylvia atricapilla*

A common summer visitor, breeding in **Blackies Lane**, **Leacroft Hedge** and elsewhere. It is more often seen here on passage or in gardens in the winter. In 2020 they must have bred as the adults and 5 chicks visited a *Mahonia* for its berries all through summer.

Wintering records from **Leacroft** include:

1999: 13/3 (male)
2001: 28/1, 22/12 – 31/12 (male) was joined by another male on 31/12.
2002: 1/1, 21/12 (male).
2003: 11/1 – 12/1 (male), 18/1 (female), 21/2 (male).
2006: 15/1 (male).
2007: 25/2 (male).
2008: 27/1 – 15/3 (male) was joined by another male on 17/2.
2009: 24/12 – 31/12 (female).
2010: 1/1 (pair), 21/1 (male), 23/1 – 23/3 (pair).
2012: 11/2 – 15/2 (male).
2013: 7/12 (female).
2014: 15/11 (male), 26/12 (female).
2017: 22/11 (male)

2018: 15/3 (male)

2019: 28/11 (female), 18/12 (male), 25/12 – 30/12 (male and female)

2020: 1/1 (female), 19/11 (male), 25/11 (female), 6/12 (male)

2021: 6/1 (male)

Garden Warbler *Sylvia borin*

An uncommon summer visitor. Occasionally sings from **Leacroft Hedge** in the spring, usually staying for only a day or two, occasionally longer. Records include 6/5/00, 22/6/01, 9/5/02 to 19/5/02 and 7/7/02. A pair bred in **Leacroft Hedge** in 2003; the last sighting being on 16/8. In 2004 a bird was in **Leacroft Hedge** from 5/5 – 6/5, 21/8 and 5/9. One was singing in **Leacroft Hedge** on 2/5/05 and 9/7/05; in 2006 on 26/4; in 2014 on 3/5, May 2018.

Lesser Whitethroat *Sylvia curruca*

An uncommon summer visitor. It can be heard singing in most springs and is occasionally seen on passage in hedgerows behind **Leacroft** and on the **Grassy Patch**. Records from **Leacroft Hedge** itself include **1996** 12/5, 15/5, **2001** 25/5, 3/7, 27/8, 23/9, **2002** 5/5, 23/6, **2004** 2/5, 16/5, 25/5, **2005** 2/5, 19/6, 11/9, **2006** 29/4, **2007** 15/4, **2008** 3/5, **2009** 10/5, 26/4, 25/5, **2011** 22/4, **2014** 27/4, **2015** 27/4, **2016** 23/4, 7/5 – 8/5, 1/6, **2017** 31/5, **2018** 22/9, **2019** 5/7, 20/4, **2020** 23/4, 1/6.

Whitethroat *Sylvia communis*

A not uncommon summer visitor which breeds in nearby hedgerows, including those of the **Grassy Patch**, most year. In **2019** one on the **Grassy Patch** 24/6 probably bred there. Passage birds have been seen in **Leacroft Hedge** on; **1999** 19/8, **2000** 10/5, **2001** 19/5, **2002** 4/7, 10/5 - 15/6, **2004** 2/5, 16/5, **2008** 8/5-18/5, 1/6 (pair), 30/8, 7/9 (two), **2010** 10/7, **2013** 26/5, **2014** 27/4, 3/5, **2015** 26/4, **2020** 9/5.

Sedge Warbler *Acrocephalus schoenobaenus*

A bird sang behind **Leacroft** for most of 30/4/97. One sang briefly on the **Grassy Patch** in 2019.

Waxwing *Bombycilia garrulus*

A single bird was seen feeding on an ornamental Crab Apple *Malus* in a **Leacroft** garden on 12/1/03. In 2005 there was a nationwide invasion with large numbers in Staffordshire. A flock of 20 was seen in the same ornamental Crab Apple in **Leacroft** on 26/3 and 29/3/05. A very late group of five landed briefly in **Boundary Oak** on 10/4/11. Fifteen landed in **Leacroft Hedge** on 26/12/12.

Nuthatch *Sitta europaea*

Common in surrounding woodland. Sometimes visits garden bird feeders, staying for some days or weeks if they find good feeding. Two are common in **Leacroft Hedge** but three were seen on 14/6/15.

Treecreeper *Certhia familiaris*

Common in surrounding woodland. Singles regularly move through **Leacroft Hedge** with tit flocks but two were seen on 2/11/96 and on 8/11/03.

Wren *Troglodytes troglodytes*

A common garden visitor and breeder.

Starling *Sturnus vulgaris*

Breeds in small numbers with flocks of up to 100 often being seen around the estate. Records of larger flocks include 300 on 27/10/00 and 200 flying north on 27/10/01 with 150 on a **Leacroft** roof on 22/9/03. A flock of over 1,000 circled the estate at dusk for several weeks in February 2017. In winter of 2018 /19 a huge roost on **Opal Way Industrial Estate** resulted in large numbers passing over the estate on most evenings en-route to the roost.

Blackbird *Turdus merula*

A common garden visitor and breeder. In the autumn it is not uncommon to see from 10–15 visiting the hawthorns of **Leacroft Hedge**. Up to 17 were seen in the hawthorns on the **Grassy Patch** on 23/11/18 and ten on 2/12/20. Ten fed in a Crab Apple in **Leacroft** 6/1/21.

Fieldfare *Turdus pilaris*

Common winter visitor; often seen flying over in flocks of 100 or more. Frequently seen in Hawthorn bushes even those bordering gardens. Forty were seen in **Leacroft Hedge** in December 1996 and 2002. Late records include a flock of 100 seen on 23/3/02 and another on 10/4/03.

Song Thrush *Turdus philomelos*

An uncommon garden visitor now. Three in a **Leacroft** garden is the largest number seen. Occasionally seen in **Upper Wood**, **Blackies Lane** and other hedgerows.

Redwing *Turdus iliacus*

A common winter visitor; often seen flying over in flocks of 100 or more. Frequently seen in Hawthorn bushes, even those bordering gardens, in harsh weather.

Mistle Thrush *Turdus viscivorus*

Occasionally seen and heard flying overhead and singing in the early spring. Rarely comes to gardens. Largest flock was of three that landed in **Lone Oak** on 22/12/01. A flock of seven flew over on 21/9/2008. One in the garden on 17/12/09 and three briefly on an ornamental Crab Apple in a **Leacroft** garden with one on 13/10/20.

Spotted Flycatcher *Muscicapa striata*

A rare species in our area. The only records involve birds seen in **Leacroft Hedge** on 5/9/96 and 24/9/96, which coincided with a large fall on the east coast, one on 6/9/03, one on 29/8/08.

Robin *Erithacus rubecula*

A common garden visitor and breeder.

Black Redstart *Phoenicurus ochruros*

A male was seen and heard singing from rooftops in **Leacroft** in the early hours of 19/4/98. A day or two later a pair was seen in the centre of Newcastle.

Redstart *Phoenicurus phoenicurus*

An immature bird was seen in **Leacroft Hedge** on 13/7/99. A female was seen by the **Newt Pools** 29/6/19.

Whinchat *Saxicola rubetra*

A female was seen on the fence alongside **Lower Meadow** on 12/9/02.

Duncock *Prunella modularis*

A common garden visitor and breeder, up to three are seen regularly in our **Leacroft** garden.

House Sparrow *Passer domesticus*

Still a common bird. The largest gatherings used to be in **Leacroft Hedge**. Twenty were counted on 18/2/05, 25 on 23/8/09, 40 on 8/8/10, 45 on 28/9/13. However, numbers have declined somewhat since then. Small gatherings occur in several hedges around the ring road.

Tree Sparrow *Passer montanus*

There used to be a small colony behind **Leacroft**. Juvenile birds were often seen in **Leacroft Hedge** in the summer. The largest numbers recorded include 10 on 22/8/01 and 23/9/01, 20 on 29/9/02, 18 on 25/12/05, 17 on 31/12/08 which, with others in the fields behind, means that there was up to 30 in the area. Flocks of 10–15 were regular in **Leacroft Hedge** but since 2010 only very occasionally seen. These include five on 26/03/11, one on 13/1/13, six on 11/1/14 and four on 22/2/14. Since then, they seemed to have gone until one was seen on 28/3/20.

Yellow Wagtail *Motacilla flava*

One seen flying over **Upper Meadow** on 27/4/97 is the only record.

Grey Wagtail *Motacilla cinerea*

Occasionally seen flying over; **Lodge** and **Boundary Brooks** proving attractive to them.

Pied Wagtail *Motacilla alba yarellii*

Commonly seen around the estate in ones and twos where they visit gardens and lawns. Larger numbers include a flock of 20 flying north on 10/10/96 and 20 in the newly-ploughed **Crop Field** on 4/10/97. Flock of 17 flew over on 10/10/12.

Meadow Pipit *Anthus pratensis*

Often seen and heard on spring and autumn passage. Records include: 23/11/96, 2/12/96, 31/12/96 (two), 9/9/97, 11/10/97, 27/9/98 (five), 18/10/98 (10),

21/9/99 (12), 20 landed in **Upper Meadow** on 5/3/00 and 25 on 18/3/00, 17/3/02 (15), 15 in **4X4 Field** on 12/10/02 and six on 3/11/02, 4/1/03 (two), seven in **Upper Meadow** and five in **Lower Meadow** on 16/3/03, 30 in **Crop Field** on 23/3/03, 10 in **Lower Meadow** on 19/10/03 and one on 24/12/03. In 2004 there were over 100 in **Upper Meadow** on 16th February and 90 on 7th March.

Brambling *Fringilla montifringilla*

An uncommon winter visitor. Birds have been seen in **Leacroft Hedge** on 3/4/98, 29/1/00, 15/1/02, 28/3/02 (male), 31/3/02 – 1/4/02 (female), 7/4/02 (two males and a female), 18/3/03 (female), 10/11/03 (female), 16/11/03 (male and female) 21-22/2/04 (male), 29/2/04 pair), 10/3/08 (male). A female was seen in **Upper Wood** on 10/11/02. One was in **Boundary Hedge** on 30/10/05. One in **Leacroft Hedge** 20/11/10 (female), 28/11/10 (male). 2011 was exceptionally cold and birds were around for many days, peaking at 14 on 19/02/11. There were two on 26/1/13, male on 16/2/13, female on 23/10/17, male on 12/12/17 and two males on 29/3/18, one 9/10/18 and one 19/3/20 and a male on 20/11/21.

Chaffinch *Fringilla coelebs*

A common breeder and frequent garden visitor. Flocks of over 100 have been seen on surrounding farmland in the winter. Records of larger gatherings include 150 in the **Crop Field** on 7/11/99, 30 in **Blackies Lane** on 29/10/00, 70 in the **Crop Field** on 3/11/00, 70 by **The Pond** on 18/11/01 and 100-150 in the **Crop Field/Boundary Hedge** during late December 2001.

Bullfinch *Pyrrhula pyrrhula*

Birds, usually in pairs, are often seen in surrounding hedgerows. The larger numbers in **Leacroft Hedge** include a male and three females on 7/1/06 and three on 22/2/08, three on 16/11/08, three on 23/8/09, three on 21/11/09

Greenfinch *Chloris chloris*

Declining breeder and garden visitor with groups of up to 20 visiting **Leacroft** gardens in the 1990s but more recently a maximum of only seven on 1/8/10; more often ones and twos.

Linnet *Linaria canabina*

Birds are occasionally heard flying over. Records include 20 on 8/10/96, 12 on 5/1/97, 10 in **Crop Field** 4/10/97, 20 on 30/8/99, 10 on 5/10/99, 5 on 9/10/99, a pair by **Boundary Brook** on 13/4/02, pair in **Upper Meadow** on 23/4/02, 70 in **4X4 Field** on 12/9/02 and 50 on 12/10/02 after which it was ploughed up. The only record for 2003 was a flock of four in the **4X4 Field** on 21/3. The sole 2004 record comprised two along **Boundary Brook** on 25th April. One was seen gathering nesting material and a flock of 20 flew over **Leacroft** on 24/4/05. One was seen on 5/9/15 flying over **Leacroft**.

Lesser Redpoll *Acanthis cabaret*

Numbers are very variable from year to year. Records include two on 19/2/97, five on 1/11/97, 12 on 7/4/00, 30 on 17/11/00, two feeding on Greater Willowherb by **Boundary Brook** on 31/12/01, one flew over on 9/11/02, two fed on Greater Willowherb seed-heads along **Boundary Brook** on 28/3/04 and also on 27/12/05, one fed in **Leacroft** on nyger seed on 11/4/08. Five fed on nyger seed on 8/2/09. Up to 12 remained in the hedge until 11/4/09. There were two on nyger seed 31/01/10. 2011 was exceptionally cold and birds were around for many days with a max of four in February. Up to five visited feeders in January 2012. One was seen in **Leacroft** on 1/1/18.

Common Crossbill *Loxia curvirostra*

A flock of 10 flew over **Leacroft** on 13/7/97. This coincided with an irruption of migrants into the county.

Goldfinch *Carduelis carduelis*

An increasingly common visitor to gardens. Small flocks visit the thistle heads behind **Leacroft** and on the **Grassy Patch** in autumn and winter and they are often heard flying over the estate at any time of the year. There is a regular pre-roost gathering of up to 100 in a birch tree on **Saddler Avenue**. A flock of 20 flew over on 23/11/96 and 25 on 20/1/01. A flock of ten was seen with the mixed Chaffinch, Sparrow and Yellowhammer flock in **Boundary Hedge** on 23/12/01 and a flock of 20 was in the **4X4 Field** on 13/9/02. Between 30 and 40 were feeding on thistles in **Lower Meadow** on 7/9/03; 30 behind **Leacroft Hedge** on 18/10/08; 20 on 17/10/10. 2011 was exceptionally cold and birds were around for many days, peaking at 20 in January. A flock of 30 arrived on 09/10/11 and remained in to 2012. On 30/09/12 the flock reached 50 with the same number on 30/12/12! Up to 30 were in **Leacroft Hedge** on 22/3/13. Flocks numbering over 50 are now not uncommon over the estate.

Siskin *Spinus spinus*

A winter visitor in variable numbers. They are often attracted to the alders along the stream in **Blackies Lane** and, when in the area, they often visit garden nut feeders. There was a flock of 17 on 30/11/97 with up to eight from February to April 2009 with Lesser Redpolls. A late bird was seen on 5/5/97. 2011 was exceptionally cold and birds were around for many days, peaking at 30 on 13/03/11. A flock of c.30 was seen in birches behind **Mercer Avenue** in February 2019.

Yellowhammer *Emberiza citrinella*

Breeds occasionally in surrounding hedgerows but rarely comes close to gardens. There were two in **Leacroft Hedge** on 7/11/96, seven in **Blackies Lane** on 21/12/96, one in **Leacroft Hedge** plus five by stables on 25/12/96 and two by the Pond on 18/11/01. During December 2001 / January 2002 a flock of around 200

finches, buntings and sparrows was seen in **Boundary Hedge** and the **Crop Field**. Among these were up to 70 Yellowhammers! The largest counts were 50 on 23/12/01 and 70 on 31/12/01 and 1/1/02. In 2003, a flock of 30 was seen in a small Hawthorn in **Upper Meadow** on 24/12. A flock of 20 was in **Upper Meadow** on 16/2/04. A male dropped into a **Leacroft** garden on 23/12/2018.

Reed Bunting *Emberiza schoeniclus*

An uncommon bird in the area. Singles were seen in **Leacroft Hedge** on 18/12/96 and 24/12/96 and a pair on 31/12/96. A male was seen in **Leacroft Hedge** on 22/12/01 and three with the finch, sparrow, bunting flock in the **Crop Field** on 31/12/01 and six on 12/1/02. A female was in **Leacroft Hedge** on 1/3/03 and a pair on 3/3/03. Two were seen with Yellowhammers in **Upper Meadow** on 16/2/04. A male was seen on our bird table on 12/3/06 and 16/12/07 and one on 10/03/12. A male was seen on the **Grassy Patch** on 26/2/19.

Exotica – birds escaped from captivity

Canary *Serinus canaria*

A bird resembling the wild race was seen around **Leacroft** from 18/8/97 to 31/8/97. It showed aggressive behaviour towards Greenfinches but fed happily with other species.

Yellow-fronted Canary *Serinus mozambicus*

A male bird arrived in **Leacroft Hedge** on 20/9/02 and remained through to 2/11/02. During its stay it fed from the bird table and from a suspended seed feeder. It called frequently and fed happily in the company of other birds.



The plants mentioned are generally distributed in the study area unless indicated otherwise.

Equisetaceae

Field Horsetail *Equisetum arvense* common.

Polypodiaceae

Common Polypody *Polypodium vulgare* **Blackies Lane**.

Aspleniaceae

Hart's-tongue *Asplenium scolopendrium* on the bank of the stream behind **Mercer Avenue** and growing in several grids on the estate!

Dryopteridaceae

Male-fern *Dryopteris filix-mas* **Blackies Lane**.

Broad Buckler-fern *Dryopteris dilatata* uncommon.

Hard Shield-fern *Polystichum aculeatum* one plant in **Blackies Lane**.

Pinaceae

Hybrid Larch *Larix x marschlinii* **Lodge Plantation**.

Ranunculaceae

Wood Anemone *Anemone nemorosa* **Upper Wood**.

Marsh-marigold *Caltha palustris* **Boundary Brook**.

Meadow Buttercup *Ranunculus acris* **Upper and Lower Meadows**.

Creeping Buttercup *Ranunculus repens* common everywhere.

Bulbous Buttercup *Ranunculus bulbosus* **The Meadows, AL Parkway** central reservation.

Lesser Celandine *Ranunculus ficaria* common everywhere.

Papaveraceae

Long-headed Poppy *Papaver dubium* Occasional records.

Greater Celandine *Chelidonium majus* **Lower Blackies Lane**.

Ulmaceae

Wych Elm *Ulmus glabra* Hedgerows eg. **Blackies Lane**.

Urticaceae

Common Nettle *Urtica dioica* common everywhere.

Fagaceae

Pedunculate Oak *Quercus robur* several 180-year-old trees survive. Saplings common.

Betulaceae

Alder *Alnus glutinosa* **Lodge Brook**.

Hazel *Corylus avellana* **Blackies Lane, Boundary Path**; common.

Chenopodiaceae

Fat-hen *Chenopodium album* in waste places.

Common Orache *Atriplex patula* common in waste places and gutters.

Portulacaceae

Pink Purslane *Claytonia sibirica* formerly in **Blackies Lane**.

Caryophyllaceae

Thyme-leaved Sandwort *Arenaria serpyllifolia* common.

Common Chickweed *Stellaria media* common everywhere.

Greater Stitchwort *Stellaria holostea* **Blackies Lane**.

Lesser Stitchwort *Stellaria graminea* uncommon.

Common Mouse-ear *Cerastium fontanum* common everywhere.
Red Campion *Silene dioica* Blackies Lane, Grassy Patch.

Polygonaceae

Amphibious Bistort *Persicaria amphibia* Newt Pools.
Redshank *Persicaria maculosa* common.
Equal-leaved Knotgrass *Polygonum arenastrum* common.
Black-bindweed *Fallopia convolvulus* uncommon.
Curled Dock *Rumex crispus* common.
Broad-leaved Dock *Rumex obtusifolius* very common.
Common Sorrel *Rumex acetosa* common.

Clusiaceae

Trailing St John's-wort *Hypericum humifusum* Leacroft lawn.
Perforate St John's-wort *Hypericum perforatum* Grassy Patch

Malvaceae

Dwarf Mallow *Malva neglecta* by the entrance to Blackies Lane and on Uttoxeter Road close by.

Violaceae

Field Pansy *Viola arvensis* Leacroft lawn. Now gone.

Salicaceae

Goat Willow *Salix caprea* along Boundary Brook.
Crack Willow *Salix fragilis* planted along Boundary Brook.

Brassicaceae

Hedge Mustard *Sisymbrium officinale* Border Path.
Garlic Mustard *Alliaria petiolate* common Blackies Lane, Border Path.
Marsh Yellow-cress *Rorippa palustris* Entrance to AL Parkway. Now gone.
Lady's Smock *Cardamine pratensis* Boundary Brook, Upper Meadow.
Hairy Bitter-cress *Cardamine hirsuta* common everywhere.
Shepherd's-purse *Capsella bursa-pastoris* common everywhere.
Field Pennycress *Thlaspi arvense* Upper Meadow, scarce here.

Primulaceae

Primrose *Primula vulgaris* Upper Wood, Blackies Lane, Grassy Patch.

Crassulaceae

New Zealand Pigmyweed *Crassula helmsii* Newt Pools where it is abundant.

Saxifragaceae

Opposite-leaved Golden-saxifrage *Chrysosplenium oppositifolium* Lodge Brook and Upper Wood.

Celandine Saxifrage *Saxifraga cymbalaria* in a lawn in Leacroft 23/4/20 and 2021. A rare garden escape in the county.

Rosaceae

Hawthorn *Crataegus monogyna* common.
Strawberry *Fragaria sp.* Grassy Patch.
Tormentil *Potentilla erecta* NW edge of Upper Meadow.
Creeping Cinquefoil *Potentilla reptans* Grassy Patch.
Agrimony *Agrimonia eupatoria* by the Newt Pools.
Wild Cherry *Prunus avium* Upper Wood, Blackies Lane.
Cherry-plum *Prunus cerasifera* by Boundary Path.
Wild Plum *Prunus domestica* Grassy Patch. Produces profuse, cherry-sized fruits.
Blackthorn *Prunus spinosa* common.
Field Rose *Rosa arvensis* common on Grassy Patch.
Dog-rose *Rosa canina* common, especially by The Stile.
Bramble *Rubus fruticosus* agg. common.

Fabaceae

Meadow Vetchling *Lathyrus pratensis* common on Grassy Patch.
Common Bird's-foot-trefoil *Lotus corniculatus* common on Grassy Patch.
Greater Bird's-foot-trefoil *Lotus pedunculatus* Boundary Brook, Grassy Patch.
Black Medick *Medicago lupulina* common everywhere.
White Clover *Trifolium repens* common everywhere.
Alsike Clover *Trifolium hybridum* scarce on Grassy Patch.
Lesser Trefoil *Trifolium dubium* very common, especially on lawns.
Red Clover *Trifolium pratense* common on grassy places everywhere.
Zigzag Clover *Trifolium medium* scarce on Grassy Patch.
Narrow-leaved Vetch *Vicia sativa nigra* Grassy Patch.
Common Vetch *Vicia sativa segetalis* common.
Tufted Vetch *Vicia cracca* uncommon.
Hairy Tare *Vicia hirsuta* common on Grassy Patch.
Smooth Tare *Vicia tetrasperma* common on Grassy patch.
Bush Vetch *Vicia sepium* common.

Onagraceae

Great Willowherb *Epilobium hirsutum* common along watercourses like Boundary Brook.
Broad-leaved Willowherb *Epilobium montanum* common.
Hoary Willowherb *Epilobium parviflora* in the gutters of Saddler Avenue.
Rosebay *Chamerion angustifolium* Grassy Patch.

Aquifoliaceae

Holly *Ilex aquifolium* Blackies Lane.

Euphorbiaceae

Dog's Mercury *Mercurialis perennis* Blackies Lane.

Sun Spurge *Euphorbia helioscopia* common in waste areas.

Petty Spurge *Euphorbia peplus* common, often in gardens and along footpaths.

Linaceae

Flax *Linum usitatissimum* occasional bird seed alien. Lyndhurst Grove 2021.

Hippocastanaceae

Horse-chestnut *Aesculus hippocastanum* Upper Wood, Grassy Patch.

Aceraceae

Field Maple *Acer campestre* along Blackies Lane, by The Oaks, occasional trees elsewhere.

Sycamore *Acer pseudoplatanus* common.

Oxalidaceae

Wood-sorrel *Oxalis acetosella* Upper Wood.

Geraniaceae

Cut-leaved Crane's-bill *Geranium dissectum* by the wicket gate; behind Leacroft.

Shining Crane's-bill *Geranium lucidum* Lower Blackies Lane.

Herb-Robert *Geranium robertianum* common.

Meadow Cranesbill *Geranium pratense* one plant by railway line/Pingle Lane

Araliaceae

Common Ivy *Hedera helix* subsp. *helix* common.

Apiaceae

Cow Parsley *Anthriscus sylvestris* common, especially on Blackies Lane.

Pignut *Conopodium majus* uncommon in The Meadows.

Hemlock *Conium maculatum* near the Grassy Patch. Now gone.

Hogweed *Heracleum sphondylium* common.

Fool's Parsley *Aethusa cynapium* One plant off Leander Drive 2019.

Solanaceae

Bittersweet *Solanum dulcamara* occasional in hedgerows.

Convolvulaceae

Hedge Bindweed *Calystegia sepium* Blackies Lane, Grassy Patch.

Lamiaceae

Hedge Woundwort *Stachys sylvatica* Blackies Lane.

White Dead-nettle *Lamium album* common.

Red Dead-nettle *Lamium purpureum* common.

Selfheal *Prunella vulgaris* common, often in lawns.

Callitrichaceae

Common Water-starwort *Callitriche stagnalis* grows in The Pond and Newt Pools.

Plantaginaceae

Greater Plantain *Plantago major* very common.

Ribwort Plantain *Plantago lanceolata* very common.

Oleaceae

Ash *Fraxinus excelsior* Blackies Lane, Boundary Path. Seeds readily.

Veronicaceae

Foxglove *Digitalis purpurea* common.

Purple Toadflax *Linaria purpurea* common garden escape.

Brooklime *Veronica becabunga* around the Newt Pools.

Common Field-speedwell *Veronica persica* common in short turf eg. The Meadows.

Germander Speedwell *Veronica chamaedrys* common.

Thyme-leaved Speedwell *Veronica serpyllifolia* common.

Wall Speedwell *Veronica arvensis* common garden plant.

Campanulaceae

Harebell *Campanula rotundifolia* grassy bank north of the wicket gate.

Rubiaceae

Cleavers *Galium aparine* very common.

Crosswort *Cruciata laevipes* Blackies Lane.

Caprifoliaceae

Honeysuckle *Lonicera periclymenum* common eg Blackies Lane.

Elder *Sambucus nigra* common.

Asteraceae

Devil's-bit Scabious *Succisa pratensis* grassy bank north of wicket gate.

Spear Thistle *Cirsium vulgare* common.

Creeping Thistle *Cirsium arvense* common.

Common Knapweed *Centaurea nigra* common.

Chicory *Cichorium intybus* Leacroft – probable bird seed alien. Now gone.

Nipplewort *Lapsana communis* common on Blackies Lane, Boundary Path along Saddler Avenue.

Cat's-ear *Hypochaeris radicata* common.

Autumn Hawkbit *Leontodon autumnalis* common. Often seen in gutters.

Bristly Oxtongue *Helminthotheca echioides* rough ground by side of The Pond, now gone and in gutter on Saddler Avenue in 2021.

Perennial Sow-thistle *Sonchus arvensis* common.

Prickly Sow-thistle *Sonchus asper* common.

Dandelion *Taraxacum agg.* very common.

Hawkweed sp. *Hieracium sp.* common; which species is uncertain.
Fox-and-Cubs *Pilosella aurantiaca* scattered on verges around the estate.
Daisy *Bellis perennis* very common everywhere.
Yarrow *Achillea millefolium* common.
Oxeye Daisy *Leucanthemum vulgare* Grassy Patch
Scented Mayweed *Matricaria recutita* common.
Pineappleweed *Matricaria discoidea* common.
Scentless Mayweed *Tripleurospermum inodorum* common.
Common Ragwort *Senecio jacobaea* uncommon.
Groundsel *Senecio vulgaris* common everywhere.
Colt's-foot *Tussilago farfara* along Boundary Brook.

Araceae

Lords-and-Ladies *Arum maculatum* Blackies Lane, Leacroft Hedge.

Lemnaceae

Common Duckweed *Lemna minor* in The Pond.

Juncaceae

Hard Rush *Juncus inflexus* Lower Boundary Brook, Grassy Patch.
Soft-rush *Juncus effusus* Lower Boundary Brook.
Field Wood-rush *Luzula campestris* common; often in lawns.

Cyperaceae

Hairy Sedge *Carex hirta* Grassy Patch.
Pendulous Sedge *Carex pendula* stream side behind Mercer Avenue; the Newt Pools.
Common Spike-rush *Eleocharis palustris* in the Newt Pools

Poaceae

Creeping Bent *Agrostis stolonifera* very common.
Black-grass *Alopecurus myosuroides* Leacroft 1996.
Barren Brome *Anisantha sterilis* Blackies Lane.
Meadow Foxtail *Alopecurus pratensis* very common.
Sweet Vernal-grass *Anthoxanthum odoratum* common.
False Oat-grass *Arrhenatherum elatius* common.
False Brome *Brachypodium sylvaticum* Blackies Lane.
Common Soft-brome *Bromus hordeaceus* common.
Crested Dog's-tail *Cynosurus cristatus* common in The Meadows, Grassy Patch.
Cock's-foot *Dactylis glomerata* common everywhere.
Tufted Hair-grass *Deschampsia cespitosa* Lower Boundary Brook
Cockspur *Echinochloa crus-galli* entrance to Aston Lodge Parkway and Boundary Path 2021.
Common Couch *Elytrigia repens* uncommon on the Grassy Patch.
Red Fescue *Festuca rubra* common.
Plicate Sweet-grass *Glyceria notata* Wet flush by Boundary Brook.
Yorkshire-fog *Holcus lanatus* common.

Creeping Soft-grass *Holcus mollis* common.
Meadow Barley *Hordeum secalinum* in a verge by Saddler Avenue 2020.
Perennial Rye-grass *Lolium perenne* very common.
Italian Rye-grass *Lolium multiflorum* common.
Timothy *Phleum pratense* common.
Annual Meadow-grass *Poa annua* very common everywhere.
Smooth Meadow-grass *Poa pratensis* common.
Rough Meadow-grass *Poa trivialis* common.
Bread Wheat *Triticum aestivum* in the gutter at entrance to Aston Lodge Parkway 2020.

Typhaceae

Bulrush *Typha latifolia* Lower Boundary Brook.

Liliaceae

Bluebell *Hyacinthoides non-scripta* Blackies Lane, Upper Wood.
Ramsons *Allium ursinum* along Lodge Book by Blackies Lane.

Dioscoreaceae

Black Bryony *Tamus communis* Blackies Lane.

Orchidaceae

Bee Orchid *Ophrys apifera* two plants in the Aston Lodge Parkway central reservation 2019, 2020, 2021.



Together with the moths, butterflies form the Lepidoptera, literally meaning scale-winged and referring to the tiny dust-like scales that cover their body and wings. They also have a coiled proboscis for sucking nectar. The usual flight period of the adult is given below.

Hesperiidae

Small Skipper *Thymelicus sylvestris* common; Jun–Aug.
Essex Skipper *Thymelicus lineola* a recent colonist; now common, especially on Grassy Patch; Jun–Aug.
Large Skipper *Ochlodes faunus* common; Jun–Aug.

Pieridae

Orange-tip *Anthocharis cardamines* common; Apr–Jun.
Large White *Pieris brassicae* very common; two overlapping broods; Apr–Oct.
Small White *Pieris rapae* very common; two overlapping broods; Apr–Oct.

Green-veined White *Pieris napi* very common; two overlapping broods; Apr–Oct.

Clouded Yellow *Colias croceus* Leacroft 5/9/04.

Brimstone *Gonepteryx rhamni* occasionally seen in spring; two overlapping broods; Apr–Sep.

Nymphalidae

Speckled Wood *Pararge aegeria* common; two overlapping broods Apr–Oct.

Wall *Lasiommata megera* Leacroft 29/7/2007.

Small Heath *Coenonympha pamphilus* one record; Grassy Patch 1997.

Ringlet *Aphantopus hyperantus* common; Jun–Aug.

Meadow Brown *Maniola jurtina* common; Jun–Sep.

Gatekeeper *Pyronia tithonus* common; Jun–Sep.

Silver-washed Fritillary *Argynnis paphia* a rare vagrant; one was seen in Leacroft 2/8/18.

Red Admiral *Vanessa atalanta* common resident and migrant; Apr–Nov.

Painted Lady *Vanessa cardui* a migrant; Apr–Oct; variable numbers. 2019 was a good year.

Small Tortoiseshell *Aglais urticae* common resident and migrant; overwinters as adult.

Peacock *Aglais io* common; overwinters as an adult.

Comma *Polygonia c-album* common; overwinters as an adult.

Lycaenidae

Green Hairstreak *Callophrys rubi* one in a Leacroft garden 1/6/20 was most unexpected.

Purple Hairstreak *Neozephyrus quercus* flying around an oak behind Leacroft 25/7/99.

White-letter Hairstreak *Satyrrium w-album* Rare; 1 or 2 seen annually on the Grassy Patch.

Small Copper *Lycaena phlaeas* frequent; two broods Apr–Oct.

Holly Blue *Celastrina argiolus* common; two broods; Mar–May, Jun–Sep.

Common Blue *Polyommatus icarus* frequent; two or three broods May–Sep; 16 were counted on the Grassy Patch in 2018.



The majority of records below come from moth trapping in a Leacroft garden. The term “agg.” (aggregate) is used to indicate a group of species that can’t be identified without dissection, so sight-only records go down as agg.

Eriocraniidae

Dyseriocrania subpurpurella one record; 9/5/10

Hepialidae

Orange Swift *Triodia sylvina* common species; Jul–Sep.

Common Swift *Korscheltellus lupulinus* common species; May–Jul.

Ghost Moth *Hepialus humuli* common species; Jun–Aug.

Nepticulidae

Stigmella aurella common species; larvae mine the leaves of Bramble.

Adelidae

Cauchas rufimitrella common species in Blackies Lane in May flying around Jack-by-the-Hedge. Also in nearby gardens.

Tineidae

Cork Moth *Nemapogon cloacella* one record; Leacroft 13/7/13.

Tinea trinotella one record; Leacroft 13/7/06.

Roeslerstammiidae

Roeslerstammia erxlebella one record; Leacroft 30/7/18.

Gracillariidae

Aspilapteryx tringipennella one, Leacroft 7/8/20.

Caloptilia alchimiella/robustella Leacroft August 2020.

Calybites phasianipennella one Leacroft 5/8/20.

Parornix anglicella one Leacroft 23/7/21.

Parornix devoniella Common leaf miner on leaves of Hazel.

Firethorn Leaf Miner *Phyllonorycter leucographella* common; mines the leaves of *Pyracantha*.

Horse-chestnut Leaf Miner *Cameraria ohridella* common on Horse-chestnut leaves.

Yponomeutidae

Bird-cherry Ermine *Yponomeuta evonymella* a common species; Jun–Aug.

Yponomeuta padella/malinellus the two species cannot be separated. The aggregate is common.

Spindle Ermine *Yponomeuta cagnagella* two records; Leacroft 16/7/05 and 13/7/06.

Willow Ermine *Yponomeuta rorella* one record; Leacroft 23/7/18.

Pseudoswammerdamia combinella one record; Leacroft 7/5/20.

Swammerdamia pyrella Leacroft 6/7/17, 3 in 2021.

Paraswammerdamia nebulella two records; Leacroft 10/7/2005, 12/7/2019.

Ypsolophidae

Honeysuckle Moth *Ypsolopha dentella* common; larvae feed on honeysuckle.

Ypsolopha scabrella common species.

Ochsenheimeria urella a rare county species. Breeds on the Grassy Patch. Flies Aug–Sep.

Plutellidae

Diamond-back Moth *Plutella xylostella* a well-known migrant. Numbers vary year to year.
Plutella porrectella uncommon species. Three records; [Leacroft 23/8/08, 28/8/08, 11/6/10](#).

Argyresthiidae

Argyresthia albistria [Leacroft 31/7/20](#).
Cypress Tip Moth *Argyresthia cupressella* one record; [Leacroft 17/6/19](#).
Argyresthia bonnetella one record; [Leacroft 21/7/18](#).
Argyresthia brockeella one record; [Leacroft 4/7/19](#).
Argyresthia goedartella one record; [Leacroft 26/7/06](#).
Argyresthia trifasciata [Leacroft 17/5/20](#).

Lyonetiidae

Apple Leaf Miner *Lyonetia clerkella* [Leacroft 5/8/20](#)

Praydidae

Ash Bud Moth *Prays fraxinella* two records: [Leacroft 15/6/12, 6/7/17](#).

Scythropiidae

Hawthorn Moth *Scythropia crataegella* [Leacroft 29/06/19, 22/06/20](#)

Oecophoridae

White-shouldered House Moth *Endrosia sarcitrella* common year-round in houses, sheds etc.
Brown House Moth *Hofmannophila pseudospretella* common year-round in houses.
Crassa unitella a common species; Jun–Sep.
Esperia sulphurella one [Augustine Close 25/4/20](#).
Tachystola acroxantha two records; [Leacroft 13/10/17, 14/11/17](#).

Chimabachidae

Diurnea fagella common species Feb–Mar.

Peleopodidae

Carcina quercana a common oak-feeding species; Jun–Aug.

Depressariidae

Agonopterix arenella three records; [Leacroft 9/7/04, 13/9/06, 10/4/11](#).
Agonopterix heracliiana one record; [Leacroft 19/2/12](#).

Gelechiidae

Brachmia blandella two records; [Leacroft 17/7/17, 12/7/19](#).
Helcystogramma rufescens one record; [Leacroft 26/7/12](#).
Bryotropha domestica one record; [Leacroft 24/7/05](#).
Bryotropha terrella one record; [Leacroft 11/6/10](#).
Bryotropha affinis one record; [Leacroft 19/7/17](#).
Teleiodes vulgella one record; [Leacroft 23/6/21](#)

Coleophoridae

Coleophora deauratella one record; [Leacroft 19/7/21](#)

Elachistidae

Elachista argentella one record; [Leacroft 19/7/21](#)

Parametriotidae

Blastodacna hellerella two records; [Leacroft 19/7/17, 29/6/19](#).

Momphidae

Mompha conturbatella one record; [Leacroft 21/6/18](#).
Mompha jurassicella one record; [Leacroft 24/2/21](#); first county record.
Mompha ochraceella one record; [Leacroft 2/7/21](#).
Mompha subbistrigella one record; [Leacroft 10/1/16](#).

Blastobasidae

Blastobasis adustella common species; Jul–Sep.
Blastobasis lacticolella common species; Jul–Sep.

Alucidae

Twenty-plume Moth *Alucita hexadactyla* common, often in houses. Larvae on Honeysuckle.

Pterophoridae

Triangle Plume *Platyptilia gonodactyla* two records; [Leacroft 13/7/06, 11/7/10](#).
Beautiful Plume *Amblyptilia acanthadactyla* common species.
Twin-spot Plume *Stenoptilia bipunctidactyla* one record; [Leacroft 2/9/05](#).
Common Plume *Emmelina monodactyla* a common species; two broods; Feb–Apr, Jun–Oct.

Choreutidae

Nettle-tap *Anthophila fabriciana* common species, more often seen in daytime on flowerheads; May–Oct.

Tortricidae

Red-barred Tortrix *Ditula angustiorana* a common species; Jun–Aug.
Large Fruit-tree Tortrix *Archips podana* three records; [Leacroft 10/7/04, 11/7/09, 16/6/17](#).
Rose Tortrix *Archips rosana* one record; [Leacroft 28/7/04](#).
Ptycholomoides aeriferanus one record; [Leacroft 3/8/07](#).
Chequered Fruit-tree Tortrix *Pandemis corylana* a common species; Jul–Sep.
Barred Fruit-tree Tortrix *Pandemis cerasana* one record; [Leacroft 1/9/05](#).
Dark Fruit-tree Tortrix *Pandemis heparana* three records; [Leacroft 19/7/17, 3/7/18, 4/8/18](#).
Syndemis musculana three records; [Leacroft 19/5/10, 4/6/10, 19/5/12](#).
Lozotaenia forsterana a common species; Jun–Jul.

Timothy Tortrix *Aphelia paleana* a common species; May–Jul.

Cyclamen Tortrix *Clepsis spectrana* a common species; May–Sep.

Clepsis consimilana a common species; Jun–Oct.

Light Brown Apple Moth *Epiphyas postvittana* very common species; two overlapping broods; Mar–Sep.

Lozotaeniodes formosanus two records; **Leacroft** 6/7/02, 14/6/17.

Tortricodes alternella a common species Jan–Feb.

Grey Tortrix *Cnephasia stephensiana* one record; **Leacroft** 29/7/04.

Green Oak Tortrix *Tortrix viridana* a common oak-feeding species; May–Jul.

Aleimma loeflingiana two records; **Leacroft** 19/6/18, 5/7/19.

Acleris forsskaleana a common species; Jun–Aug.

Rhomboid Tortrix *Acleris rhombana* one record; **Leacroft** 8/7/19.

Acleris laterana/comariana these two cannot be separated without dissection. Common.

Rhomboid Tortrix *Acleris rhombana* **Leacroft** 08/07/19

Garden Rose Tortrix *Acleris variegana* a common species; Jul–Nov.

Pseudargyrotoza conwagana common species; May–Aug.

Cochylimorpha straminea one record; **Leacroft** 6/8/18.

Agapeta hamana a common species; May–Aug.

Eudemis profundana **Leacroft** 23/7/21.

Apotomis betuletana one record; **Leacroft** 22/6/05.

Marbled Orchard Tortrix *Hedya nubiferana* a common species; May–Aug.

Plum Tortrix *Hedya pruniana* a frequent species; May–Aug.

Celypha striana a common species; Jun–Aug.

Celypha lacunana a common species; May–Sep.

Lobesia abscisana one record; **Leacroft** 15/7/17.

Ancyliis badiana frequent species; two broods; Apr–Jun, Jul–Sep.

Ancyliis achatana frequent species.

Bud Moth *Spilonota ocellana* common species.

Nut Bud Moth *Epinotia tenerana* one record; **Leacroft** 30/8/18.

Epinotia nisella one record; **Leacroft** 4/8/17.

Eucosma cana a frequent species; Jun–Jul.

Gypsonoma dealbana two records; **Leacroft** 10/7/04, 12/7/19.

Gypsonoma sociana three records; **Leacroft** 27/7/06, 1/7/18, 23/7/18.

Epiblema cynosbatella a common species; May–Jul.

Bramble Shoot Moth *Notocelia uddmanniana* a common species; Jun–Sep.

Notocelia roborana three records; **Leacroft** 8/7/04, 3/7/18, 16/7/19.

Notocelia trimaculana one record; **Leacroft** 25/6/13.

Codling Moth *Cydia pomonella* common species; May–Sep.

Cydia splendana a frequent species; Jun–Sep.

Pammene fasciana a frequent species; Jun–Jul.

Pammene aurita **Leacroft** 10/8/21.

Fruitlet Mining Tortrix *Pammene rhediella* one record; **Leacroft** 7/5/17.

Cossidae

Leopard Moth *Zeuzera pyrina* **Leacroft** 8/7/05, 26/6/20, 21/7/21.

Sesiidae

Lunar Hornet Moth *Sesia bembeciformis* **Leacroft** July 2020 and 2021 a number came to pheromone lure, maximum of seven on 8/7/21.

Zygaenidae

Six-spot Burnet *Zygaena filipendulae* day-flier. Two records; on the **Grassy Patch** 9/7/10, 29/7/19.

Narrow-bordered Five-spot Burnet *Zygaena lonicerae* an uncommon day-flier. On the **Grassy Patch**.

Pyralidae

Bee Moth *Aphomia sociella* a common species; May–Aug.

Wax Moth *Galleria mellonella* scarce species. One record; **Leacroft** 12/9/06.

Rhodophaea formosa one record; **Leacroft** 17/7/17.

Dioryctria abietella **Leacroft** 12/07/19

Phycita roborella a frequent species; Jul–Aug.

Trachycera advenella a common species; Jul–Aug.

Acrobasis consociella one record; **Leacroft** 17/7/17.

Thistle Ermine *Myelois circumvoluta* three records; **Leacroft** 1999, 3/7/04, 13/7/06.

Euzophera pinguis a frequent species; Jun–Sep.

Meal Moth *Pyralis farinalis* an uncommon species; Jun–Aug.

Gold Triangle *Hypsopygia costalis* a common species; Jun–Sep.

Hypsopygia glaucinalis a frequent species; Jun–Sep.

Crambidae

Mint Moth *Pyrausta aurata* a common day-flying species May–Sep, especially around mint or marjoram.

Phlyctaenia coronata a frequent species; Jun–Sep.

Phlyctaenia perlucidalis one record; **Leacroft** 19/6/18.

Small Magpie *Eurrhyncha hortulata* a common species; May–Aug.

Rusty-dot Pearl *Udea ferrugalis* a scarce migrant. **Leacroft** 14/7/17, 14/11/17.

Udea lutealis a very common species; often seen during the day on flowers; Jul–Aug.

Udea prunalis a common species; Jun–Aug.

Udea olivalis a common species; Jun–Aug.

Mother of Pearl *Patania ruralis* a very common species, especially around nettles; Jun–Sep.

Rush Veneer *Nomophila noctuella* three records; **Leacroft** 31/7/06, 4/8/06, 15/7/17. A migrant.

Box-tree Moth *Cydalima perspectalis* **Pembroke Drive** and **Leacroft** 2021.

Garden Pebble *Evergestis forficalis* a frequent species; May–Aug.

Evergestis pallidata an uncommon species; Jun–Aug.

Scoparia ambigualis common species; May–Aug.

Scoparia pyralella one record; **Leacroft** 14/7/05.

Dipleurina lacustrata a common species; Jun–Aug.

Eudonia truncicolella one record; **Leacroft** 30/6/09.

Eudonia mercurella a frequent species; Jun–Sep.

Calamotropha paludella **Leacroft** 21/7/21

Garden Grass-veneer *Chrysoteuchia culmella* very common species; Jun–Aug.

Crambus pascuella a common species; Jun–Aug.

Crambus lathoniellus two records; **Leacroft** 12/7/04, 18/6/05.

Crambus perlella a common species; Jun–Aug.

Agriphila tristella a very common species; Jun–Sep.

Agriphila latistria two records; **Leacroft** 9/7/04, 28/7/11.

Agriphila selasella three records; **Leacroft** 13/8/17, 24/7/18, 6/8/18.

Agriphila straminella a very common species; Jun–Aug.

Agriphila geniculea a common species; Jul–Sep.

Catoptria falsella one record; **Leacroft** 2/9/18.

Brown China-mark *Elophila nymphaeata* a common species. Larvae are aquatic; Jun–Sep.

Water Veneer *Acentria ephemerella* a species prone to mass emergences. Over 200 on 8/7/18.

Small China-mark *Cataclysta lemnaea* three records; **Leacroft** 30/6/09, 31/5/18, 6/7/18.

Beautiful China-mark *Nymphula nitidulata* two records; **Leacroft** 15/7/17, 29/7/17.

Donacaula forficella three records; **Leacroft** 7/7/10, 7/6/18, 4/7/18.

Drepanidae

Oak Hook-tip *Watsonalla binaria* common species; one or two records per year; two broods Apr–Sept.

Pebble Hook-tip *Drepana falcataria* two records; **Leacroft** 7/5/18, 31/7/18.

Chinese Character *Cilix glaucata* a common species; two broods; Apr–Sep.

Peach Blossom *Thyatira batis* **Leacroft** one or two per year; Jun–Jul.

Buff Arches *Habrosyne pyritoides* common species, up to 10 per year; Jun–Jul.

Figure of Eighty *Tethea ocellaris* **Leacroft** one or two per year; Jun–Jul.

Common Lutestring *Ochropacha duplaris* **Leacroft** 21/5/20.

Lasiocampidae

December Moth *Poecilocampa populi* common Nov–Dec.

Drinker *Euthrix potatoria* uncommon, one or two per year; Jun–Jul.

Sphingidae

Lime Hawk-moth *Mimas tiliae* a common species; one or two per year; Apr–Jul.

Eyed Hawk-moth *Smerinthus ocellata* one or two per year; May–July

Poplar Hawk-moth *Laothoe populi* commonest hawk-moth; up to 40 per year; May–Aug.

Humming-bird Hawk-moth *Macroglossum stellatarum* a day-flying migrant often reported from gardens. Numbers are usually erratic. 2019 was a good year; some years none at all.

Elephant Hawk-moth *Deilephila elpenor* a common species up to 30 per year; May–Aug.

Small Elephant Hawk-moth *Deilephila porcellus* uncommon but annual; June–July

Pine Hawk-moth *Sphinx pinastri* one **Leacroft** 24/7/20, one **Saddler Avenue** 27/7/21 *Bev Robson*.

Geometridae

Small Dusty Wave *Idaea seriata* uncommon; two or three per year; two broods May–July and Aug–Oct.

Single-dotted Wave *Idaea dimidiata* very common; May–Sept.

Small Fan-footed Wave *Idaea biselata* very common; May–Aug.

Riband Wave *Idaea aversata* very common; May–Sept.

Small Blood-vein *Scopula imitaria* scarce species; six records during July.

Blood-vein *Timandra comae* uncommon species, two or three per year; May–Oct.

Clay Triple-lines *Cyclophora linearia* uncommon species, **Leacroft** 15/9/20.

Shaded Broad-bar *Scotopteryx chenopodiata* common day-flier; July–Aug.

Garden Carpet *Xanthorhoe fluctuata* very common species; two broods; Apr–Oct.

Dark-barred Twin-spot Carpet *Xanthorhoe ferrugata* uncommon; two records; **Leacroft** 29/7/11, 21/8/15.

Flame Carpet *Xanthorhoe designata* common species; two broods Apr–Sep.

Silver-ground Carpet *Xanthorhoe montanata* common species; May–Jul.

Large Twin-spot Carpet *Xanthorhoe quadrifasiata* uncommon species; six records; Jun–Aug.

Yellow Shell *Camptogramma bilineata* common species; Jun–Aug.

Common Carpet *Epirrhoe alternata* very common; two broods; May–Sep.

Shoulder Stripe *Anticlea badiata* uncommon species; Mar–May.

Streamer *Anticlea derivata* uncommon species; Mar–May.

July Highflyer *Hydriomena furcata* a common species; Jun–Aug.

May Highflyer *Hydriomena impluviata* three records; **Leacroft** 5/6/10, 27/5/17, 7/6/18.

Ruddy Highflyer *Hydriomena ruberata* one record in 1999.

Spruce Carpet *Thera britannica* two records; **Leacroft** 1999 and 14/11/08.

Grey Pine Carpet *Thera obeliscata* one record; **Leacroft** 9/11/17.

- Juniper Carpet** *Thera juniperata* uncommon; one or two records per year; Oct–Nov.
- Blue-bordered Carpet** *Plemyria rubiginata* one record; **Leacroft** 29/7/17.
- Barred Yellow** *Cidaria fulvata* uncommon; seven records Jun–Aug.
- Broken-barred Carpet** *Electrophaes corylata* uncommon; four records; May–Jun.
- Purple-bar** *Cosmorhoe ocellata* **Leacroft** 2/7/21
- Phoenix** *Eulithis prunata* uncommon; five records during July.
- Spinach** *Eulithis mellinata* one record; **Leacroft** 20/6/18.
- Barred Straw** *Eulithis pyraliata* frequent; Jun–Jul.
- Small Phoenix** *Ecliptopera silaceata* common; two overlapping broods; May–Sep.
- Red-green Carpet** *Chloroclysta siterata* common; two broods; Mar–May and Sep–Dec.
- Common Marbled Carpet** *Chloroclysta truncata* common; two broods; May–Jul, Aug–Oct.
- Dark Marbled Carpet** *Chloroclysta citrata* one record; **Leacroft** 23/6/06.
- Green Carpet** *Colostygia pectinataria* common; two broods; May–Jul, Aug–Oct.
- Mottled Grey** *Colostygia multistrigaria* one record; **Leacroft** 10/4/99.
- Water Carpet** *Lampropteryx suffumata* two records; **Leacroft** 18/5/10, 3/5/18.
- Winter Moth** *Operophtera brumata* very common Nov–Feb.
- November Moth** *Epirrita dilutata* common Oct–Nov.
- Autumnal Moth** *Epirrita autumnata* one record; **Leacroft** 14/10/05.
- Small Yellow Wave** *Hydrelia flammeolaria* two records; **Leacroft** 1/7/09 and 25/6/18.
- Scallop Shell** *Rheumaptera undulata* one record; **Leacroft** 30/6/09.
- Chimney Sweeper** *Odezia atrata* day-flier. One record; **Grassy Patch** 9/6/18.
- Rivulet** *Perizoma affinitata* common species; Apr–Sep.
- Small Rivulet** *Perizoma alchemillata* common species; May–Aug.
- Sandy Carpet** *Perizoma flavofasciata* three records; **Leacroft** 27/7/08, 16/6/17, 25/6/18.
- Double-striped Pug** *Gymnoscelis rufifasciata* common species. Two overlapping broods Mar–Sep.
- V-Pug** *Chloroclystis v-ata* common species. Two broods; Apr–May, Jun–Aug.
- Green Pug** *Pasiphila rectangularata* common species; Jun–Aug.
- Slender Pug** *Eupithecia tenuiata* two records; **Leacroft** 15/7/17 and 2/8/17.
- Foxglove Pug** *Eupithecia pulchellata* common species; May–Aug.
- Brindled Pug** *Eupithecia abbreviata* common species; Mar–Jun.
- Oak-tree Pug** *Eupithecia dodoneata* frequent species; Apr–Jun.
- Juniper Pug** *Eupithecia pusillata* frequent species; July.
- White-spotted Pug** *Eupithecia tripunctaria* three records; 31/5/18, 25/5/19, 30/5/19.
- Golden-rod Pug** *Eupithecia virgaureata* two records; **Leacroft** 27/6/08, 8/7/18.
- Dwarf Pug** *Eupithecia tantillaria* two records; **Leacroft** 15/7/05, 25/5/19.
- Narrow-winged Pug** *Eupithecia nanata* three records; **Leacroft** 17/7/13, 13/8/17, 25/5/18.
- Lime-speck Pug** *Eupithecia centaureata* frequent; Jul–Aug.
- Freyer's Pug** *Eupithecia intricata* frequent; May–Jun.
- Wormwood Pug** *Eupithecia absinthiata* two records; **Leacroft** 20/7/11, 25/7/18.
- Currant Pug** *Eupithecia assimilata* one record; **Leacroft** 20/8/10.
- Common Pug** *Eupithecia vulgata* common; Apr–Jun.
- Mottled Pug** *Eupithecia exigua* uncommon; May–Jun.
- Tawny Speckled Pug** *Eupithecia icterata* one record; **Leacroft** 7/8/06.
- Grey Pug** *Eupithecia subfuscata* uncommon; May–Jun.
- Streak** *Chesias legatella* one record; **Leacroft** 12/10/11.
- Magpie Moth** *Abraxas grossulariata* uncommon; Jul–Aug.
- Clouded Border** *Lomaspilis marginata* common; May–Jul.
- Tawny-barred Angle** *Macaria liturata* **Leacroft** 25/7/21
- Latticed Heath** *Chiasmia clathrata* uncommon; Jun–Jul.
- Brown Silver-line** *Petrophora chlorosata* uncommon; May–Jun.
- Scorched Wing** *Plagodis dolabraria* frequent; May–Jun.
- Brimstone Moth** *Opisthograptis luteolata* common; May–Oct.
- Bordered Beauty** *Epione repandaria* one record; **Leacroft** 19/7/17.
- Lilac Beauty** *Apeira syringaria* one record; **Leacroft** 1999.
- August Thorn** *Ennomos quercinaria* one record; **Leacroft** 1999.
- Canary-shouldered Thorn** *Ennomos alniaria* frequent; Aug–Sep.
- Dusky Thorn** *Ennomos fuscantaria* common; Jul–Sept.
- September Thorn** *Ennomos erosaria* frequent; Jul–Sep.
- Early Thorn** *Selenia dentaria* common. Two broods Apr–May, Jul–Aug.
- Purple Thorn** *Selenia tetralunaria* two broods; three records; **Leacroft** 26/4/04, 18/7/09, 24/7/17.
- Scalloped Hazel** *Odontopera bidentata* common; May–Jun.
- Scalloped Oak** *Crocallis elinguaris* common; July.
- Swallow-tailed Moth** *Ourapteryx sambucaria* common; Jun–Jul.
- Feathered Thorn** *Colotois pennaria* uncommon; Oct–Nov.
- March Moth** *Alsophila aescularia* uncommon; March.
- Pale Brindled Beauty** *Phigalia pilosaria* common; Jan–Feb.
- Brindled Beauty** *Lycia hirtaria* common; Apr–May.
- Oak Beauty** *Biston strataria* uncommon; Jan–Mar.

Peppered Moth *Biston betularia* common species; May–Jul.

Dotted Border *Agriopis marginaria* common species; Feb–Mar.

Mottled Umber *Erannis defoliaria* common overwintering species; Sep–Jan.

Waved Umber *Menophra abruptaria* frequent species; Apr–May.

Willow Beauty *Peribatodes rhomboidaria* common species; Jun–Sep.

Mottled Beauty *Alcis repandata* common species; Jun–Aug.

Engrailed *Ectropis crepuscularia* common species; May–Aug.

Bordered White *Bupalus piniaria* one record; **Leacroft** 22/7/04. Larvae a pest on conifers.

Common White Wave *Cabera pusaria* frequent species; Jun–Jul.

Common Wave *Cabera exanthemata* common species; Jun–Aug.

White-pinion Spotted *Lomographa bimaculata* one record; **Leacroft** 16/6/17.

Clouded Silver *Lomographa temerata* common species; May–Jul.

Early Moth *Theria primaria* one record in Feb 1999.

Light Emerald *Campaea margaritata* common species Jun–Jul.

Large Emerald *Geometra papilionaria* uncommon species; Jun–Aug.

Little Emerald *Jodis lactearia* one record; **Leacroft** 10/6/05.

Common Emerald *Hemithea aestivaria* common species; Jun–Jul.

Notodontidae

Sallow Kitten *Furcula furcula* frequent species; two broods; Apr–Jun, Jul–Aug.

Alder Kitten *Furcula bicuspis* two records; **Leacroft** 8/6/06, 18/6/13.

Poplar Kitten *Furcula bifida* uncommon species; May–Jun.

Lunar Marbled Brown *Drymonia ruficornis* uncommon species; Apr–May.

Iron Prominent *Notodonta dromedarius* common species; two broods; Apr–Aug.

Pebble Prominent *Notodonta ziczac* frequent species; two broods; Apr–Aug.

Swallow Prominent *Pheosia tremula* common species; two broods; Apr–Aug.

Lesser Swallow Prominent *Pheosia gnoma* common species; two broods; Apr–Sep.

Pale Prominent *Pterostoma palpina* frequent species; two broods; Apr–Aug.

Coxcomb Prominent *Ptilodon capucina* frequent species; Apr–Aug.

Buff-tip *Phalera bucephala* common species; May–Jul.

Chocolate-tip *Clostera curtula* uncommon; two broods Apr–May, Jul–Aug.

Erebidae

Herald *Scoliopteryx libatrix* one to three records annually. Overwinters as an adult.

Straw Dot *Rivula sericealis* common species on grassy areas; May–Oct.

Snout *Hypena proboscidalis* common species; two overlapping broods; Jun–Oct.

White Satin *Leucoma salicis* uncommon species; Jul–Aug.

Black Arches *Lymantria monacha* uncommon species; **Leacroft** 15/9/20, 21/7/21

Yellow-tail *Euproctis similis* common species; Jul–Aug.

Pale Tussock *Calliteara pudibunda* common species; May–Jun.

Vapourer *Orgyia antiqua* common day-flying species Jul–Oct.

Buff Ermine *Spilosoma luteum* common species; May–Jul.

White Ermine *Spilosoma lubricipeda* common species; May–Jul.

Muslin Moth *Diaphora mendica* common species; Apr–Jun.

Ruby Tiger *Phragmatobia fuliginosa* common species; two broods; Apr–Sep.

Garden Tiger *Arctia caja* uncommon species; Jun–Aug.

Cinnabar *Tyria jacobaeae* common day-flier; grassy places with Ragwort; May–Jul.

Round-winged Muslin *Thumatha senex* uncommon; **Leacroft** 9/7/15, 16/7/21, 19/7/21.

Buff Footman *Eilema depressa* frequent species; Jul–August.

Dingy Footman *Eilema griseola* common species; July–Aug.

Common Footman *Eilema lurideola* common species; Jun–Aug.

Scarce Footman *Eilema complana* common species; Jun–Aug.

Fan-foot *Zanclognatha tarsipennalis* common species; Jun–Aug.

Small Fan-foot *Herminia grisealis* common species; Jun–Aug.

Marsh Oblique-barred *Hypenodes humidalis* **Leacroft** 19/7/21

Pinion-streaked Snout *Schrankia costaestrigalis* **Leacroft** 14/7/20.

Blackneck *Lygephila pastinum* three records; **Leacroft** 3/7/11, 15/7/11, 8/7/18.

Beautiful Hook-tip *Laspeyria flexula* frequent species; Jun–Jul.

Red Underwing *Catocala nupta* uncommon; **Leacroft** 23/8/19, 23/8/21

Burnet Companion *Euclidia glyphica* day-flier; one record; **Grassy Patch**; 1/7/17.

Noctuidae

Spectacle *Abrostola tripartita* common species; May–Aug.

- Dark Spectacle** *Abrostola triplasia* three records; **Leacroft** 1999, 29/6/09, 13/6/18.
- Burnished Brass** *Diachrysis chrysis* frequent species; two broods; Jun–Oct.
- Silver Y** *Autographa gamma* very common migrant often seen in daytime; May–Nov.
- Beautiful Golden Y** *Autographa pulchrina* common species; Jun–Aug.
- Plain Golden Y** *Autographa jota* common species; Jun–Aug.
- Gold Spot** *Plusia festucae* common species; two overlapping broods; May–Sep.
- Lempke's Gold Spot** *Plusia putnami* two records; **Leacroft** 2/8/11, 17/6/19.
- Marbled White Spot** *Protodeltote pygarga* two records: **Leacroft** 1/7/17, 1/6/18.
- Figure of Eight** *Diloba caeruleocephala* frequent; Oct.
- Alder Moth** *Acronicta alni* uncommon species; May.
- Grey Dagger** *Acronicta psi* common species; Jul–Aug.
- Sycamore** *Acronicta aceris* uncommon species; Jul–Aug.
- Miller** *Acronicta leporina* uncommon species; Jun–Aug.
- Light Knot Grass** *Acronicta menyanthidis* one record; **Leacroft** 24/5/18.
- Knot Grass** *Acronicta rumicis* **Leacroft** 1/8/19, 31/7/20.
- Poplar Grey** *Acronicta megacephala* uncommon species; Jun–Jul.
- Coronet** *Craniophora ligustri* **Leacroft** 16/7/21
- Small Yellow Underwing** *Panemeria tenebrata* day-flier; one record **Blackies Lane** 2017.
- Shark** *Cucullia umbratica* uncommon species; Jun–Jul.
- Mullein** *Shargacucullia verbasci* four records; **Leacroft** 9/4/99, 16/4/7, 3/5/18, 19/6/19 (larva).
- Copper Underwing** *Amphipyra pyramidea* common species; Jul–Oct.
- Svensson's Copper Underwing** *Amphipyra berbera* common species; Jul–Oct.
- Mouse Moth** *Amphipyra tragopoginis* uncommon species; Jul–Oct.
- Green-brindled Crescent** *Allophyes oxyacanthae* frequent species; Sep–Nov.
- Early Grey** *Xylocampa areola* common species; Mar–May.
- Marbled Beauty** *Cryphia domestica* common species; Jun–Sep.
- Mottled Rustic** *Caradrina morpheus* common species; May–Aug.
- Pale Mottled Willow** *Paradrina clavipalpis* frequent species; two broods; May–Oct.
- Uncertain** *Hoplodrina alsines* common species; Jun–Aug.
- Rustic** *Hoplodrina blanda* common species; Jun–Aug.
- Vine's Rustic** *Hoplodrina ambigua* scarce but increasing species; Jul–Aug.
- Bird's Wing** *Dypterygia scabriuscula* one record; **Leacroft** 17/6/19.
- Old Lady** *Mormo maura* uncommon; July–Sept.
- Straw Underwing** *Thalpophila matura* three records; **Leacroft** 28/7/07, 03/08/19, 4/8/20
- Angle Shades** *Phlogophora meticulosa* common species; two overlapping broods Apr–Nov.
- Small Angle Shades** *Euplexia lucipara* common species; May–Aug.
- Crescent** *Helotropha leucostigma* **Leacroft** 13/8/21
- Frosted Orange** *Gortyna flavago* frequent species; Aug–Oct.
- Rosy Rustic** *Hydraecia micacea* common species; July–Nov.
- Ear Moth** *Amphipoea oculea* agg. occasional records; July–Aug
- Flounced Rustic** *Luperina testacea* common species; Aug–Sep.
- Large Wainscot** *Rhizedra lutosa* two records; **Leacroft** 27/8/09, 29/7/17.
- Bulrush Wainscot** *Nonagria typhae* two records; **Leacroft** 1999, 8/8/18.
- Small Rufous** *Coenobia rufa* one record; **Leacroft** 19/7/17.
- Small Wainscot** *Chortodes pygmina* one record; **Leacroft** 21/8/04.
- Small Dotted Buff** *Photodes minima* three records; **Leacroft** 1999, 21/8/04, 19/7/17.
- Dusky Brocade** *Apamea remissa* common species; May–Aug.
- Clouded Brindle** *Apamea epomidion* uncommon; Jun–Jul.
- Clouded-bordered Brindle** *Apamea crenata* frequent species; May–Jun.
- Rustic Shoulder-knot** *Apamea sordens* common species; May–Jul.
- Small Clouded Brindle** *Apamea unanimitis* uncommon; May–Jul.
- Slender Brindle** *Apamea scolopacina* uncommon species; Jul–Aug.
- Dark Arches** *Apamea monoglypha* very common; Jun–Aug.
- Light Arches** *Apamea lithoxylaea* common species; Jun–Aug.
- Rosy Minor** *Mesoligia literosa* one record; 27/7/06.
- Cloaked Minor** *Mesoligia furuncula* uncommon; Jul–Aug.
- Marbled Minor** *Oligia strigilis* common; May–Aug.
- Tawny Marbled Minor** *Oligia latruncula* uncommon species; Jun–Jul.
- Rufous Minor** *Oligia versicolor* uncommon species; Jun–Jul.
- Middle-barred Minor** *Oligia fasciuncula* common species; May–Aug.
- Barred Sallow** *Xanthia aurago* frequent species; Sep–Oct.
- Pink-barred Sallow** *Xanthia togata*; uncommon species; Sep.
- Sallow** *Xanthia ictertia* one record; **Leacroft** 8/9/11.
- Beaded Chestnut** *Agrochola lychnidis* common species; Sep–Oct.
- Brown-spot Pinion** *Agrochola litura* frequent species; Sep–Oct.

- Flounced Chestnut** *Agrochola helvola* one record; **Leacroft** 28/9/11.
- Red-line Quaker** *Agrochola lota* frequent species; Sep–Oct.
- Yellow-line Quaker** *Agrochola macilenta* frequent species; Sep–Oct.
- Brick** *Agrochola circellaris* three records; **Leacroft** 30/9/11, 15/10/11, 25/10/17.
- Lunar Underwing** *Omphaloscelis lunosa* common species; Sep–Oct.
- Chestnut** *Conistra vaccinii* common species; two broods; Sep–Nov; Dec–Apr.
- Dark Chestnut** *Conistra ligula* uncommon species; two broods Oct; Feb–Mar.
- Pale Pinion** *Lithophane socia* **Leacroft** 20/3/21
- Grey Shoulder-knot** *Lithophane ornitopus* two broods; three records; **Leacroft** 18/3/05, 18/9/18, 5/10/18.
- Blair's Shoulder-knot** *Lithophane leautieri* frequent species; Sep–Nov.
- Satellite** *Eupsilia transversa* frequent species; two broods; Jan–May, Sep–Dec. Overwinters as an adult.
- Olive** *Ipimorpha subtusa* two records; **Leacroft** 2/8/18, 6/8/18.
- Dun-bar** *Cosmia trapezina* common species; Jul–Aug.
- Centre-barred Sallow** *Atethmia centrago* common Ash-feeding species; Aug–Sep.
- Dingy Shears** *Parastichtis ypsilon* two records; **Leacroft** 11/7/18, 12/7/19.
- Merveille du Jour** *Dichonia aprilina* frequent species; Sep–Oct.
- Brindled Green** *Dryobotodes eremita* two records; **Leacroft** 24/9/11, 9/9/18.
- Black Rustic** *Aporophyla nigra* frequent species; Sep–Oct.
- Dark Brocade** *Blepharita adusta* one record; **Leacroft** 1999.
- Pine Beauty** *Panolis flammea* three records; **Leacroft** 1999, 23/3/12, 26/4/20.
- Clouded Drab** *Orthosia incerta* very common species; Feb–May.
- Common Quaker** *Orthosia cerasi* very common species Feb–May.
- Small Quaker** *Orthosia cruda* common species; Feb–May.
- Powdered Quaker** *Orthosia gracilis* three records; **Leacroft** 19/5/12, 17/4/18, 2/5/21.
- Hebrew Character** *Orthosia gothica* very common species; Feb–May.
- Twin-spotted Quaker** *Orthosia munda* uncommon species; Mar–Apr.
- Feathered Gothic** *Tholera decimalis* common species; Aug–Sep.
- Antler Moth** *Cerapteryx graminis* two records; **Leacroft** 18/7/13, 2/8/20.
- Nutmeg** *Discestra trifolii* uncommon; June–Aug.
- Pale-shouldered Brocade** *Lacanobia thalassina* frequent species; Jun–Jul.
- Bright-line Brown-eye** *Lacanobia oleracea* common species; Apr–Aug.
- Dot Moth** *Melanchra persicariae* common species; Jun–Jul.
- Broom Moth** *Melanchra pisi* uncommon; May–Jun.
- Cabbage Moth** *Mamestra brassicae* frequent species; May–Jul.
- Broad-barred White** *Hecatera bicolorata* one record; **Leacroft** 25/6/05.
- Lychnis** *Hadena bicruris* frequent species; May–Aug.
- Varied Coronet** *Hadena compta* uncommon species; Jun–Jul.
- Brown-line Bright Eye** *Mythimna conigera* one record; **Leacroft** 18/7/04.
- Common Wainscot** *Mythimna pallens* common species; Jun–Oct.
- Smoky Wainscot** *Mythimna impura* common species; Jun–Sep.
- Clay** *Mythimna farrago* common species; Jun–Aug.
- Shoulder-striped Wainscot** *Mythimna comma* uncommon species Jun–Jul.
- Heart and Dart** *Agrotis exclamationis* very common species; May–Aug.
- Turnip Moth** *Agrotis segetum* two records; **Leacroft** 1/9/18, 13/10/18.
- Heart and Club** *Agrotis clavis* one record; **Leacroft** 29/7/11.
- Shuttle-shaped Dart** *Agrotis puta* common species; two broods; Apr–Jun, Jul–Oct.
- Dark Sword-grass** *Agrotis ipsilon* uncommon migrant; **Leacroft** 8/10/17, 4/7/20, 12/7/20.
- Flame** *Axylia putris* common species; May–Aug.
- Flame Shoulder** *Ochropleura plecta* common species; two overlapping broods; Apr–Sep.
- Purple Clay** *Diarsia brunnea* one record; **Leacroft** 1999.
- Ingrailed Clay** *Diarsia mendica* very common species; May–Aug.
- Small Square-spot** *Diarsia rubi* common species; two overlapping broods; May–Oct.
- Red Chestnut** *Cerastis rubricosa* one record; **Leacroft** 1999.
- True Lover's Knot** *Lycophotia porphyrea* uncommon; **Leacroft** 26/7/12, 10/7/18, 19/7/21, 21/7/21.
- Large Yellow Underwing** *Noctua pronuba* abundant species; Jun–Oct.
- Broad-bordered Yellow Underwing** *Noctua fimbriata* frequent species; Jul–Sep.
- Lesser Yellow Underwing** *Noctua comes* common species; Jul–Oct.
- Least Yellow Underwing** *Noctua interjecta* frequent species; Jul–Aug.
- Lesser Broad-bordered Yellow Underwing** *Noctua janthe* very common; Jul–Sep.
- Double Dart** *Graphiphora augur* three records; **Leacroft** 1/7/05, 5/7/13, 16/7/13.
- Green Arches** *Anaplectoides prasina* uncommon species; Jun–Jul.
- Dotted Clay** *Xestia baja* two records; **Leacroft** 9/8/08, 25/7/10.
- Square-spot Rustic** *Xestia xanthographa* common species; Jul–Oct.

Six-striped Rustic *Xestia sexstrigata* frequent species; Jul–Sep.
Setaceous Hebrew Character *Xestia c-nigrum* common species; overlapping broods May–Nov.
Triple-spotted Clay *Xestia ditrapezium* uncommon species; Jun–Jul.
Double Square-spot *Xestia triangulum* common species; Jun–Aug.
Gothic *Naenia typica* uncommon and decreasing species; Jun–Aug.

Nolidae

Short-cloaked Moth *Nola cucullatella* common species; Jun–Aug.
Least Black Arches *Nola confusalis* uncommon; Leacroft 19/5/10, 29/5/18, 5/6/21.
Scarce Silver-lines *Bena bicolorana* uncommon Leacroft 9/7/15, 8/7/18, 12/6/20, 24/6/20.
Green Silver-lines *Pseudoips prasinana* four records; Leacroft 13/7/13, 31/8/18, 7/6/18, 2/6/20
Oak Nyctoline *Nycteola revayana* two records; Leacroft 17/7/17, 1/7/18.

Blue-tailed Damselfly *Ischnura elegans* seen over **The Pond** and the **Newt Pools** and occasionally in gardens.
Azure Damselfly *Coenagrion puella* seen over **The Pond**, common on the **Newt Pools** and occasionally seen in gardens; even away from water.
Common Blue Damselfly *Enallagma cyathigerum* common over **The Pond** and seen on **Grassy Patch**.
Large Red Damselfly *Pyrrhosoma nymphula* common over **The Pond**, the **Newt Pools** and sometimes seen away from them.



The Dragonflies or Odonata are divided into the stout-bodied true dragonflies and the more delicate, slender-bodied damselflies. The larvae are both carnivorous and aquatic. Some adults can roam considerable distances from water.

Dragonflies

Broad-bodied Chaser *Libellula depressa* mating and egg-laying seen in **The Pond** 2005 and 2006 and in the **Newt Pools** in 2019.
Southern Hawker *Aeshna cyanea* often seen in the autumn.
Migrant Hawker *Aeshna mixta* over Leacroft 28/9/18, by **Upper Wood** 20/8/19 and Leacroft on 1/9/19.
Brown Hawker *Aeshna grandis* often seen in the autumn.
Emperor *Anax imperator* seen egg-laying in **The Pond** in 2006 and in the **Newt Pools** in 2019
Common Darter *Sympetrum striolatum* seen over **The Pond** and on the **Grassy Patch**.

Damselflies

Banded Demoiselle *Calopteryx splendens* occasionally in gardens, **Grassy Patch** and over **The Pond**.



The Grasshoppers and Crickets form the Orthoptera. Grasshoppers have short, stout antennae while those of Crickets are long and thread-like. The species here are largely grassland types and so are mainly found on the **Grassy Patch** but also occasionally in gardens bordering such habitat.

Grasshoppers

Common Green Grasshopper *Omocestes viridulus* common on the **Grassy Patch**
Lesser Marsh Grasshopper *Chorthippus albomarginatus* first recorded on the **Grassy Patch** 5/8/19 then daily into September. Now common on this site. One of the northernmost county records. Nymphs have been seen so it does breed here.
Field Grasshopper *Chorthippus brunneus* common on the **Grassy Patch**. Nymphs seen so it does breed here.
Meadow Grasshopper *Chorthippus parallelus* **Kingsland Avenue** Garden August 2020 *Sally Willden* also on **Grassy Patch**.

Crickets

Long-winged Cone-head Cricket *Conocephalus fuscus* a nymph on the **Grassy Patch** 12/8/19, an adult male on 3/9/19 and an adult female on 15/9/19 so it does breed here. A nymph was seen in 2020. One of the northernmost county records of this scarce cricket.
Roesel's Bush Cricket *Metrioptera roeselii* first record was of a male nymph swept from grass on the **Grassy Patch** 26/6/20 and an adult female too. Using a bat detector revealed it to be common with c.10 stridulating males per year. They prefer the longer grass and can be hard to find.



A huge group of insects, highly variable in shape but a constant feature is that the front pair of wings has been modified into hardened wing cases beneath which the fragile hindwings are folded.

Carabidae

Pterostichus madidus Leacroft 23/8/21.

Leistus spinibarbis Leacroft 8/10/21.

Rhipiphoridae

Wasp Nest Beetle *Metoecus paradoxus* seen on two occasions sitting on the trunk of an Ash tree alongside Boundary Path, behind Farrier Close. A strange-looking and rare insect that lives in the underground nests of wasps.

Pyrochroidae

Red-headed Cardinal Beetle *Pyrochroa serraticornis* common species, often found in gardens.

Hydrophilidae

Helophorus brevipalpis a mass emergence on 23/6/05. Large numbers in the bird bath and in the moth trap during mass emergences.

Coccinellidae

2-spot Ladybird *Coccinella 2-punctata* common everywhere.

7-spot Ladybird *Coccinella 7-punctata* common everywhere.

14-spot Ladybird *Propylea 14-punctata* common.

22-spot Ladybird *Psyllobora 22-punctata* common.

Harlequin Ladybird *Harmonia axyridis* first seen 2008, now very common.

Scarabaeidae

Dung Beetle *Aphodius rufipes* very common, sometimes 200+ in the moth trap.

Common Cockchafer *Melolontha melolontha* common.

Welsh Chafer *Hoplia philanthis* Leacroft 22/6/20.

Silphidae

Thanatophilus sinuatus Grassy Patch 17/8/19.

Lucaniidae

Lesser Stag Beetle *Dorcus parallelipipedus* Leacroft garden 11/8/20.

Cerambycidae

Red Longhorn *Stictoleptura rubra* 5/7/18 in Leacroft garden. **First county record.**

Wasp Beetle *Clytus arietus* one in Leacroft garden 1/6/20.

Four-spotted Longhorn *Leptura quadrifasciata* one behind Leacroft 22/9/21.

Chrysomelidae

Iris Flea Beetle *Aphthona nonstriata* Numerous on Yellow Iris by the Newt Pools.

Dermestidae

Common Carpet Beetle *Anthrenus verbasci* common

Oedemeridae

Thick-legged Flower Beetle *Oedemera nobilis* common.

Cantharidae

Soldier Beetle *Cantharis livida* common everywhere.

Soldier Beetle *Cantharis nigra* Leacroft garden 10/6/18.

Elateridae

Athous haemorrhoidalis Leacroft 8/5/20.



Minute to large insects, usually with two pairs of wings, the hind pair often hidden beneath the front pair. It is a huge order with many thousands of species in the UK alone. Many are difficult to identify.

Sawflies

Tenthredinidae

Figwort Sawfly *Tenthredo scrophulariae* Leacroft 27/5/20, 15/8/21

Tenthredo temula Grassy Patch 17/6/20.

Argidae

Large Rose Sawfly *Arge pagana* Leacroft 22/6/19

Arge ochropus Leacroft 2/8/20

Ichneumons

Gasteruption jaculator not uncommon in gardens.

Ichneumon sarcitorius one on Grassy Patch 24/8/20.

Ichneumon stramentor Leacroft garden 12/5/21.

Apechthis compunctor one record, **Leacroft** 17/9/20. A rare Staffordshire species.
Pimpla rufipes **Leacroft** 28/9/20
Stenichneumon culpator **Leacroft** 28/9/20, 17/10/20.
Callajoppa cirrogaster one at **Haddon Place** on 1/8/20 was the first county record of a nationally scarce species *Antonia Jackson*.

Bees

Andrenidae

Early Mining Bee *Andrena haemorrhoa* first record 2019.
Gwynne's Mining Bee *Andrena bicolor* first recorded **Leacroft** 2020.
Ashy Mining Bee *Andrena cineraria*. Common.
Tawny Mining Bee *Andrena fulva*. Common.
Grey-patch Mining Bee *Andrena nitida* First record 7/4/20 **Leacroft**.
Wilke's Mining Bee *Andrena wilkella* one 31/5/19 **Leacroft**

Megachilidae

Patchwork Leafcutter Bee *Megachile cetuncularis* common.
Willughby's Leaf-cutter Bee *Megachile willughbiella* **Leacroft** 15/8/17, 16/6/20
Red Mason Bee *Osmia bicornis* common.
Sharp-tailed Bee sp. *Coelioxys* sp. **Leacroft** 18/7/17 and several in September 2019.

Apidae

Garden Bumblebee *Bombus hortorum* common.
Tree Bumblebee *Bombus hypnorum* First seen on 15/6/13, now common everywhere.
Red-tailed Bumblebee *Bombus lapidarius* common.
White-tailed Bumblebee *Bombus lucorum* common.
Common Carder Bee *Bombus pascuorum* common.
Early Bumblebee *Bombus pratorum* common.
Buff-tailed Bumblebee *Bombus terrestris* common.
Vestal Cuckoo Bee *Bombus vestalis* one in **Mercer Avenue** 9/6/20 *Joe Stripp*.
Hairy-footed Flower Bee *Anthophora plumipes* common. First seen 22/3/2020 in a **Leacroft** garden.
Honeybee *Apis mellifera* common.

Wasps

Eumenidae

Ancistrocerus trifasciatus one **Leacroft** 28/8/21.

Vespidae

Hornet *Vespa crabro* one seen in **Leacroft** 20/7/96 was at the time only the third record of this species in Staffordshire. Seen on 13/9/08, 11/7/2018 and then frequently in 2018 and 2019 but few since.
German Wasp *Vespula germanica* common.
Common Wasp *Vespula vulgaris* very common some years.

Median Wasp *Dolichovespula media* **Grassy Patch**, 19/8/21.

Norwegian Wasp *Dolichovespula norwegica* **Leacroft** 12/6/20.

Saxon Wasp *Dolichovespula saxonica* male and female **Leacroft** 11/7/20.

Tree Wasp *Dolichovespula sylvestris* **Leacroft** 22/6/20.



True Flies or Diptera are distinguished from all other insects by having **ONE** pair of wings. There is a large number of species ranging from a few millimetres to quite sizeable insects. Many are difficult to identify.

Bibionidae

Dilophus febrilis can be extremely common.
Bibio johannis huge numbers of males fly over lawns on sunny days in spring.
St. Marks Fly *Bibio marci* common in the spring.

Bombylidae

Dark-edged Bee-fly *Bombylius major* **Leacroft** garden 7/4/17, 5/5/18, 29/3/19 (pair), 30/3/19, 26/3/20, 20/4/20. Numerous in 2021 and at several sites. A scarce but increasing species in the county.

Calliphoridae

Calliphora vomitoria a common Bluebottle.
Calliphora erythrocephala a common Bluebottle.

Conopidae

Conops quadrifasciatus behind **Leacroft** and on **Grassy Patch** 2019.
Physocephala rufipes **Grassy Patch** 2019, 2020.
Sicus ferrugineus **Grassy Patch** 1/8/19

Dolichopodidae

Poecilobothrus nobilitatus Common on mud around **The Pond**; also seen in a **Leacroft** garden.

Muscidae

Graphomya maculata **Blackies Lane**. Often seen on umbels.
Mesembrina meridiana common; often seen sunning itself on fence posts etc.
Musca autumnalis very common everywhere.
Cluster Fly *Pollenia rudis* often seen in houses over winter.

Rhinophoridae

Locust Blowfly *Stomorhinus lunata* nationally scarce species, **Leacroft** 18/9/20; second county record

Sarcophagidae – flesh flies

Sarcophaga carnaria very common everywhere

Scatophagidae - Dung Flies

Scatophaga stercoraria common yellow dung fly on cow pats etc

Sciomyzidae – Snail-eating Flies

Coremacera marginata **Grassy Patch** 17/8/19

Trypetoptera punctulata **Grassy Patch** 8/7/21.

Sepsidae

Sepsis fulgens common on garden plants.

Sepsis cynipsea common.

Stratiomyidae - Soldier Flies

Chloromyia formosa Common.

Microchrysa polita Common, especially in gardens.

Sargus bipunctatus **Leacroft** 27/9/20.

Sargus iridatus **Leacroft** 5/7/21

Syrphidae – Hoverflies

Melanostoma mellinum a common species everywhere.

Melanostoma scalare a common species everywhere.

Platycheirus albimanus a common species everywhere.

Platycheirus manicatus **Leacroft**, 18/8/21.

Platycheirus peltatus uncommon species.

Platycheirus scutatus agg. a common species everywhere.

Platycheirus granditarsa uncommon, prefers damper spots.

Chrysotoxum bicinctum uncommon species; seen on **Grassy Patch** and in **Leacroft** garden.

Chrysotoxum festivum a scarce species; seen behind **Leacroft** on 14/6/19.

Chrysotoxum verralli a rare species seen on **Grassy Patch** 14/7/19.

Epistrophe eligans uncommon. A spring species largely.

Episyrphus balteatus very common, numbers boosted by migrants.

Leucozona glauca uncommon; usually seen on umbels.

Leucozona lucorum common species.

Melangyna umbellatarum uncommon spring species.

Meliscaeva auricollis uncommon; **Leacroft** 26/9/20.

Meliscaeva cinctella uncommon; last seen 2010.

Eupeodes corollae a common species.

Eupeodes latifasciatus uncommon.

Eupeodes luniger a common species everywhere.

Dasysyrphus albostrigatus uncommon though annual.

Scaeva pyrastris a common species; numbers boosted by migrants.

Scaeva selenitica a scarce species; last seen 2005.

Sphaerophoria scripta a common species everywhere.

Syrphus ribesii a common species everywhere.

Syrphus vitripennis a common species everywhere.

Syrphus torvus an uncommon species.

Xanthogramma pedissequum **Grassy Patch** 22/6/20, **Leacroft** 14/8/20, 3/9/20.

Cheilosia pagana an uncommon species last seen.

Cheilosia illustrata a common species everywhere.

Rhingia campestris a common species everywhere.

Chrysogaster solstitialis uncommon, usually seen on umbels.

Neoascia podagrica a common species everywhere.

Riponnensia splendens an uncommon species, last seen **Leacroft** 2020.

Eristalis arbustorum a common species everywhere.

Eristalis horticola an uncommon species, last seen 2008

Eristalis intricaria a common species everywhere.

Eristalis pertinax very common species everywhere.

Eristalis tenax very common everywhere.

Eristalinus sepulchralis an uncommon species.

Helophilus hybridus **Grassy Patch** 1/9/2019, 8/7/2020, **Leacroft** 26/9/20.

Helophilus pendulus very common species.

Helophilus trivittatus **Grassy Patch** 20/8/20, **Leacroft** 2020, 2021. An uncommon species in the county.

Myathropa florea uncommon species.

Sericomyia silentis an uncommon species; one or two most years.

Sericomyia superbiens a rare Staffordshire species.

Seen on the **Grassy Patch** August 2019 and by **Newt Pools** 17/9/19.

Volucella bombylans a common species. Seen on **Grassy Patch** 22/6/21.

Volucella pellucens a common species.

Volucella zonaria one in **Mercer Avenue** 18/8/20.

Syrirta pipiens a very common species.

Xylota segnis a common species.

Xylota sylvarum an uncommon species; last seen 2018.

Tabanidae - Horseflies

Haematopota pluvialis common.

Tachinidae – Parasite flies

Eriothrix rufomaculata common on flower heads, especially in summer.

Nowickia ferox **Grassy Patch** 15/8/20; a scarce species.

Panzeria anthophila **Grassy Patch**, 10/8/21.

Tachina fera common, especially favours *Sedum* in gardens.

Voria ruralis fairly common, first noted Sept 2021.

Tephritidae – Picture-wing flies

Celery Fly *Euleia heraclei* common **Leacroft**.

Tephritis formosa **Leacroft** 15/8/10, 19/9/19.

Tephritis bardanae **Leacroft** 27/9/20

Xyphosia miliaria **Grassy Patch** on thistle flowers.

Tipulidae - Craneflies

Ctenophora pectinicornis **Blackies Lane** 19/5/19. Scarce species on rotting wood.



The plant bugs constitute a huge family of species with a great variety of form. A constant feature is a piercing and sucking mouthpart that is used to suck juices of plants or of other insects.

Acanthosomidae

Hawthorn Shieldbug *Acanthosoma haemorrhoidale* common.

Juniper Shieldbug *Cyphostethus tristriatus* 31/5/08
Leacroft – second Staffs record.

Birch Shieldbug *Elasmotethus interstinctus* common.

Pentatomidae

Bishop's Mitre Shieldbug *Aelia acuminata* common on the Grassy Patch but is scarce in the county. First seen 3/9/19.

Green Shieldbug *Palomena prasina* common.

Sloe or Hairy Shieldbug *Dolycoris baccarum* common.

Gorse Shieldbug *Piezodorus lituratus* one on the Grassy Patch 15/9/19.

Forest Bug *Pentatoma rufipes* fairly common.

Spiked Shieldbug *Picromerus bidens* one on Boundary Path 20/10/21

Coreidae

Dock Bug *Coreus marginatus* Grassy Patch 17/8/19, Leacroft 19/9/19, 2021. Seems to be common here now.

Meadow Plant Bug *Ceraleptus lividus* Grassy Patch 26/6/20. First Staffordshire record.

Rhopalidae

Cinnamon Bug *Chorizus hyoscyami* first record 2018, Leacroft. Common in the area now.

Rhopalus subrufus Leacroft 22/5/18, 17/9/19.

Lygaeidae

Nettle Ground Bug *Heterogaster urticae* nymph on Grassy Patch 18/8/19

Miridae

Deraeocoris ruber Leacroft 24/8/21.

Heterotoma planicornis common.

Grypocoris stysi Blackies Lane.

Leptopterna dolabrata Grassy Patch. Common.

Notostira elongata Grassy Patch. Common.

Cixiidae

Cixius nervosus Grassy Patch. Common.



Medium-sized insects with aquatic and predatory larvae, so mainly found near water. They resemble lacewings but the wing veins are thicker and body heavier.

Sialis lutaria seen along Lodge Brook.



Xanthostigma xanthostigma Leacroft 10/6/21.



Small to large insects with two pairs of wings covered with tiny hairs. The wings are held tent-wise over the body when at rest and the antennae project forwards. The larvae are aquatic. They are occasionally attracted to the moth trap. Records in Leacroft include:

- Athripsodes albifrons*
- Brachycentrus subnubilus*
- Glyptotaelius pellucidus*
- Halesus digitatus*
- Hydropsyche* sp.
- Limnephilus affinis*
- Limnephilus lunatus*
- Limnephilus vittatus*
- Mystacides azurea*
- Mystacides longicornis*

Oecetis ochracea
Phygadeuon grandis
Stenophylax permistus



Small to medium insects, generally green or brown with a complex network of veins in the wing. The larvae of many species are predatory on aphids so definitely gardeners' friends.

Chrysopa carnea common in houses over winter.
Micromus variegatus Leacroft 05/08/20, 31/08/20



Stoneflies belong to the Plecoptera. The larvae are aquatic and most are found by fast-flowing streams and rivers.

Common Yellow Sally *Isoperla grammatica* Leacroft 20/5/20, 30/5/21.



A gall is an abnormal growth induced by the presence of another organism living in or on the host plant and causing its cells to enlarge and/or multiply to provide shelter for the gall causer. The shape of the gall, its position, and the species of plant it is on are characteristic of the species causing it. Most are caused by mites, insects (mainly minute wasps) or fungi. Oaks are host to more gall types than any other tree.

Robin's Pincushion Gall *Diplolepis rosae*. on rose.

Knopper Gall *Andricus quercuscalicis* on oak.
Artichoke Gall *Andricus foecundatrix* on oak.
Oak Marble Gall *Andricus kollari* on oak.
Silk-button Gall *Neuroterus numismatis* on oak.
Common Spangle Gall *Neuroterus quercusbaccarum* on oak.



Little work has been done on the mammals. I am sure that the **Grassy Patch** is rich in voles and mice, but it needs specialist equipment and licences to work on them. The same can be said of bats too – there is a good population of them on the estate. The following have been recorded:

Insectivora

Hedgehog *Erinaceus europaeus* common.
Mole *Talpa europaea* common.

Chiroptera

Common Pipistrelle Bat *Pipistrellus pipistrellus* common on the estate. This one echolocates at 45khz.
Noctule Bat *Nyctalus noctula* seen over Leacroft and adjacent field margins.

Carnivora

Fox *Vulpes vulpes* common.
Weasel *Mustela nivalis* Leacroft garden 12/8/20

Lagomorpha

Brown Hare *Lepus capensis* occasional sightings near Aston Lodge Farm

Rodentia

Grey Squirrel *Sciurus carolinensis* very common.
Wood Mouse *Apodemus sylvaticus* common; comes into garages, sheds etc.
Brown Rat *Rattus norvegicus* common.



As with the mammals, little work has been done on this group. The following have been recorded.

Ranidae

Common Frog *Rana temporaria* spawn seen each year in [The Pond](#).

Bufonidae

Common Toad *Bufo bufo* occasionally seen in gardens.

Salamandridae

Great Crested Newt *Triturus cristatus* the [Newt Pools](#) dug off [Lander Close](#) to protect this species are now badly overgrown. A survey is needed to ascertain if they are still there. There have been several records of them in gardens including [Derwent Drive](#) and [Leacroft](#) in 2021.

Smooth Newt *Lissotriton vulgaris* reported from [Leacroft](#), [Kingsland Drive](#) and [Cranmore Grove](#). They appear to be in a number of gardens.

